

■ **Clamping elements**

MGB rails can be secured with manual or pneumatic clamping elements. Areas of application are:

- Table cross beams and sliding beds
- Width adjustment, stops
- Positioning of optical equipment and measuring tables

■ **Manual clamp elements HK**

The HK series is a manually activated clamping element. Contact profiles press synchronously on the free surfaces of the profile rail by using the freely adjustable clamping lever. The floating mounted contact profiles guarantee symmetrical distribution of force on the guide rail.

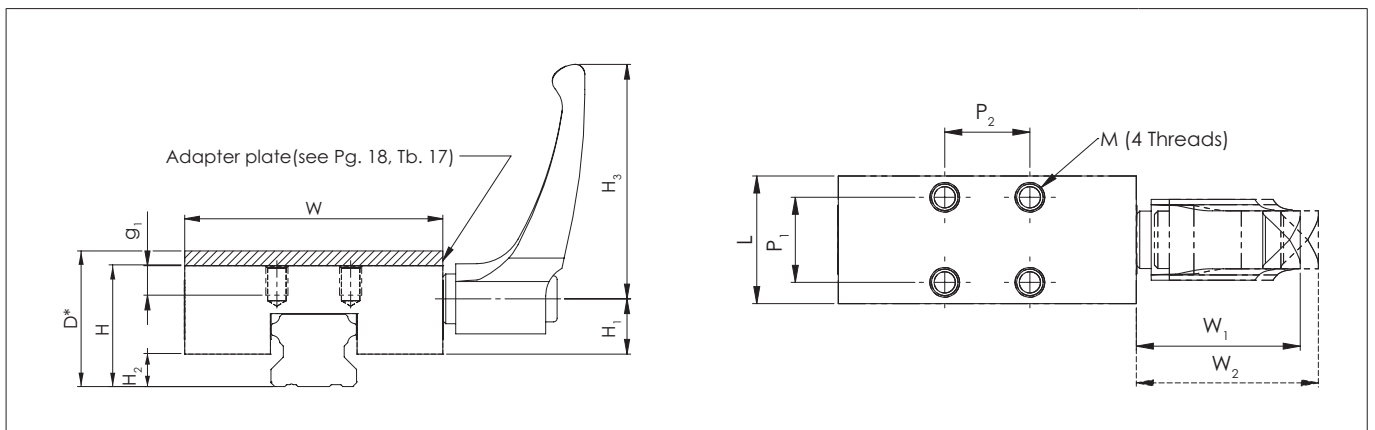
Special characteristics of the clamping elements HK:

- Simple and safe design
- Floating contact profile
- Precise positioning
- Holding force up to 2,000 N

An additional adapter plate must be used depending on the height of the carriage (see Pg. 18, Tb. 17).

Activation:

Standard with hand lever, further activation options, e.g. using DIN 912 screw, possible on request.



* Changed dimensions when using the adapter plate, see Pag. 18, Tab. 17

Fig.18

Clamping element	Size	Holding force [N]	Tightening torque [Nm]	Dimensions [mm]											M
				H	H ₁	H ₂	H ₃	W	W ₁	W ₂	L	P ₁	P ₂	g ₁	
HK1501A	15	1200	5	24	12.5	6.5	44	47	30.5	33.5	24	17	17	5	M4
HK2001A	20		7	30	13	10	63	60	38.5	41.5	24	15	15	6	M5
HK2501A	25		7	36	16.2	13		70	40.6	43.6	30	20	20	8	M6
HK3001A	30	2000	15	42	23.6	10	78	90	46.5	50.5	39	22	22	10	M8
HK3501A	35			48	27	11		100				24	24		
HK4501A	45			60	32.6	16		120				26	26		

Tab.15