

■ Pneumatic clamp elements MK/MKS

The patented wedge slide gear puts into effect high holding forces. The pressurized medium moves the wedge slide gear in the longitudinal direction. Contact profiles press with high force on the free surfaces of the profile rail by the resulting cross movement. MK is an element that closes with pneumatic pressure. The MKS closes with spring energy storage and is opened via air pressure.

Special characteristics of clamp elements MK / MKS:

- Short shape
- High clamp forces
- Precise positioning
- High axial and horizontal rigidity

Areas of application of MK/MKS:

- Positioning axes
- Setting vertical axes
- Positioning lifting gear
- Clamping machine tables

An additional adapter plate must be used depending on the height of the carriage (see Pg. 18, Tb. 18).

Connection:

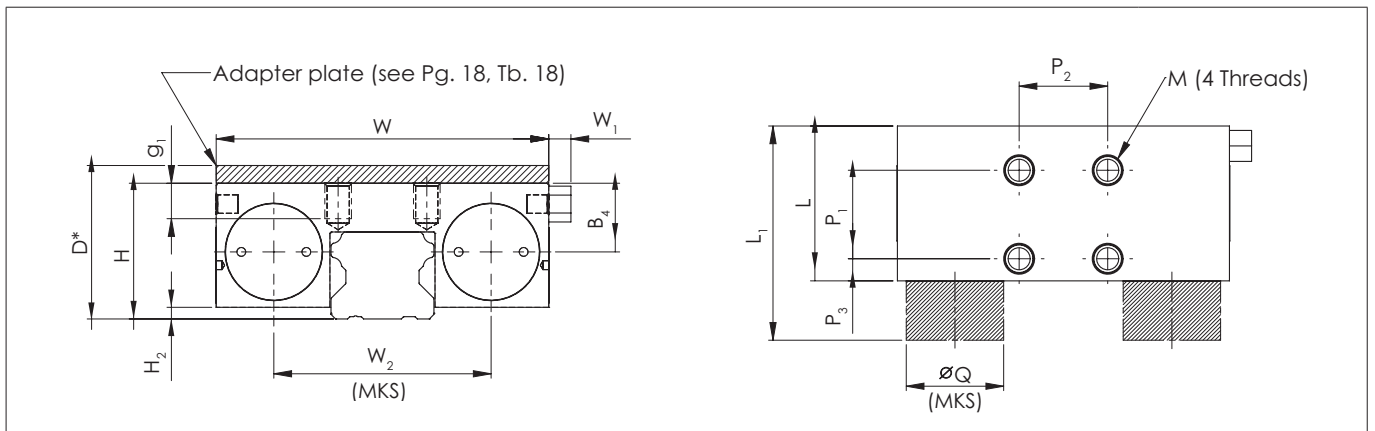
The basic MK / MKS series versions are equipped with air connections on both sides, i.e. the factory default settings air connections and the ventilation filter can be exchanged to the opposite side surfaces.

MK closes with nominal air pressure of 6 bar.

MKS opens with nominal air pressure of 6 bar.

Activation:

- MK Clamping with drop in pressure (Normally Open)
- MKS Clamping without power required (Normally Closed)



* Changed dimensions when using the adapter plate, see Pg. 18, Tb. 18

Fig.19

Clamping element	Size	MK Holding force [N]	MKS Holding force [N]	Dimensions													M
				[mm]													
				H	H ₂	W	W ₁	W ₂	B _s	L ₁	L	P ₁	P ₂	P ₃	øQ	g ₁	
MK/MKS1501A	15	650	400	24	2.5	55	5	34	12	58	39	15	15	15.5	16	4.5	M4
MK/MKS2001A	20	1000	600	30	4.5	66	6	43	14.4	61	39	20	20	5	20	5.5	M5
MK/MKS2501A	25	1200	750	36	8	75	5	49	15.5	56	35	22	22	8.5	22	8	M6
MK/MKS3001A	30	1750	1050	42	7	90	5	58	20.5	68	39	22	22	8.5	25	10	M8
MK/MKS3501A	35	2000	1250	45	8.5	100	5	68	20.5	67	39	24	24	7.5	28	10	M8
MK/MKS4501A	45	2250	1450	60	16.5	120	5	78.8	26.8	82	49	26	26	11.5	30	15	M10

* Only for model MKS

Tab.16