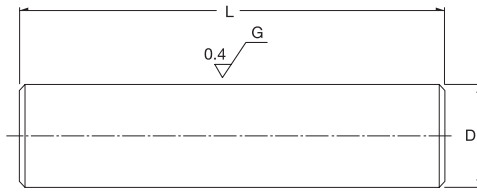


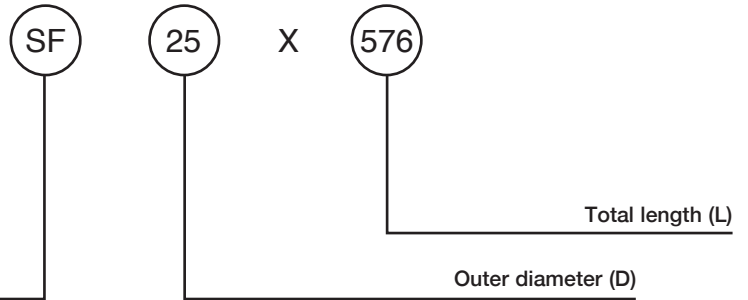
SF Serie / SF Series



5

Material

SF	SUJ2	(solid)
SFH	SUJ2	(hollow)
SFC	SUJ2	(solid chrome plating)
SFHC	SUJ2	(hollow chrome plating)
SSF	SUS440	(solid)
SSFH	SUS440	(hollow)
SFS	S45	(solid)
SFSC	S45	(solid chrome plating)



Designation /Type	Outer Diameter		Length L (mm)													Mass (g) approx.	
	D (mm)	Tolerance g6 μm	100	200	300	400	500	600	800	1000	1200	1500	1800	2000			
			[Grid for length selection]														
SF 6	6	-4/-12	100					600									230 g
SF 8	8	-5							800								400 g
SF10	10	-14								1000							620 g
SF12	12	-6										1500					890 g
SF13	13																1040 g
SF16	16	-17													2000		1580 g
SF20	20	-7															2470 g
SF25	25								400								3850 g
SF30	30	-20															5550 g
SF35	35	-9															7550 g
SF40	40																9870 g
SF50	50	-25															15400 g