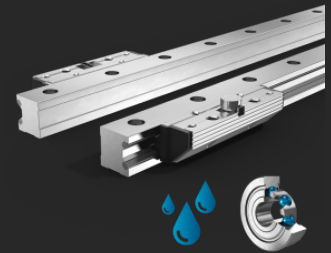


Linear Guides Type FDG-R

Pair of single rails and Pair of Roller Shoes

Non-corrosive Low-cost



Aluminum roller guides of type FDG are equipped with stainless steel raceways and ball bearings. They offer insensitivity to environmental influences at an affordable price.

Description

Franke FDG linear guides are suitable for linear motion tasks in almost all industries. They are particularly convincing in cost-sensitive applications in harsh environments and with reduced demands on load capacity. Rail elements can be manufactured in a length of 200 mm to 4000 mm and, on request, can also be linked endlessly.

Characteristics

Rollers	Ball bearing
Raceway	NIRO steel

Properties

Resilience	● ●
Dynamics	● ● ●
Corrosion resistant	● ● ● ● ● ●
Non magnetic	●
Lubricant free	●
Price	● ● ●

Technical data

Stroke length

One piece from 200 mm to 4000 mm, connectable on request

Material

Cassette plate, roller shoes,
Rail body: aluminum, anodized
Raceways: NIRO steel
Rollers: NIRO steel

Operating temperature

-20 °C to +80 °C

Maximum speed

10 m/s

Maximum acceleration

40 m/s²

Mounting position

Any

Lubricant

Lifetime-lubricated, maintenance-free

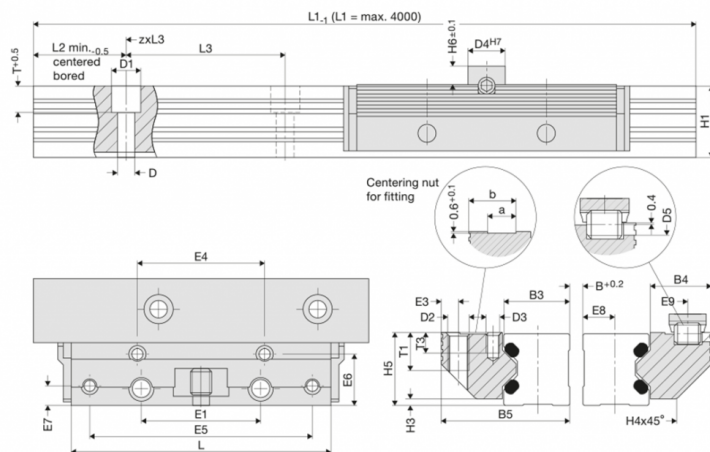
Linear Guides Type FDG-R

Pair of single rails and

Pair of Roller Shoes

Non-corrosive Low-cost

Data tables



FDG-R

Size	Dimensions mm														
	L	B5	H5	B3	B4	D3	D	D1	D2	D4	D5	E1	E3	E4	E5
12	64	24,4	15,0	12,00	11,9	M 3	3,4	6	M 4	8	3	25	3,4	29	57
15	78	30,9	19,0	15,25	15,2	M 4	4,5	8	M 5	10	4	30	4,4	34	68
20	92	40,9	23,0	20,00	20,4	M 5	5,5	10	M 6	10	4	40	4,9	42	80
25	98	48,4	27,5	25,00	22,9	M 5	6,6	11	M 8	14	6	45	6,4	48	84
35	135	68,9	37,5	35,00	32,9	M 6	9,0	15	M10	14	6	62	8,9	67	117
45	165	82,4	46,5	45,00	36,4	M 8	11,0	18	M12	14	6	80	9,9	83	146

FDG-R

Size	Dimensions mm													
	E6	E7	E8	E9	H1	H3	H4	H6	L3	T	T3	a	b	
12	9,7	3,4	5,5	4,9	14,7	1,4	5,5	4	40	5,5	6,0	4,5	9,5	
15	12,4	4,9	7,0	5,9	18,7	2,0	8,0	5	60	6,0	7,5	5,0	12,5	
20	16,9	5,9	9,5	5,9	22,6	2,0	11,0	5	60	8,0	8,0	7,5	16,0	
25	19,4	7,4	12,0	8,9	27,0	2,5	13,0	7	60	10,0	5,0	10,5	17,5	
35	28,4	8,9	17,0	8,9	37,0	3,5	20,0	7	80	11,5	8,5	12,5	26,0	
45	30,9	9,9	22,0	8,9	46,0	4,0	22,0	7	105	14,5	9,5	15,5	31,0	

Linear Guides Type FDG-R

Pair of single rails and

Pair of Roller Shoes

Non-corrosive Low-cost

Innovation in Motion



Basic load ratings, weight, length

Size	Load ratings N		Moment capacities pair of roller shoes Nm				Weight kg		Order no.
	C	C ₀	M _{0cx}	M _{cx}	M _{0cy} /M _{0cz}	M _{cy} /M _{cz}	PRS	Rail/m	
12	620	170	0,08 (B+30,3)	0,30 (B+30,3)	2,4	8,9	0,07	0,40	84495LN
15	700	230	0,10 (B+36,5)	0,35 (B+36,5)	4	12	0,12	0,80	84395LN
20	940	300	0,15 (B+47,0)	0,50 (B+47,0)	6	19	0,23	1,20	84442LN
25	1500	700	0,35 (B+58,4)	0,70 (B+58,4)	15	32	0,35	1,80	84367LN
35	3100	1400	0,70 (B+85,0)	1,50 (B+85,0)	42	95	1,00	3,10	84368LN
45	6300	2700	1,40 (B+109,0)	3,10 (B+109,0)	103	238	1,80	5,00	84369LN

Contact

Franke GmbH
 Obere Bahnstraße 64
 73431 Aalen - Germany

Tel. +49 7361 920-0
 Fax +49 7361 920-120
 info@franke-gmbh.de

DIN EN ISO 9001 QM
 DIN EN ISO 14001 QM

Created: 04.07.2025