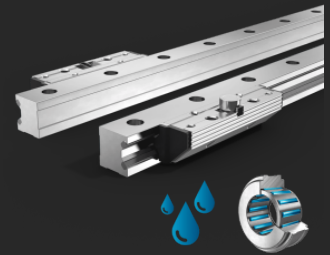


Linear guides Type FDC-R

Pair of single rails and

Pair of Roller Shoes

Non-corrosive



FDC aluminum roller guides are insensitive to harsh environmental conditions.

Description

Franke FDC linear guides are equipped with very quiet, smooth-running, high-quality needle bearings and are made almost entirely of lightweight aluminum. Inlaid raceways made of corrosion-resistant steel make them insensitive to environmental influences as well as moisture or cleaning agents. Rail elements can be manufactured in a length of 200 mm to 4000 mm and, on request, can also be linked endlessly.

Characteristics

Rollers	Needle bearing
Raceway	NIRO steel

Properties

Resilience	● ● ● ●
Dynamics	● ● ● ●
Corrosion resistant	● ● ● ● ●
Non magnetic	●
Lubricant free	●
Price	● ●

Technical data

Stroke length

One piece from 200 mm to 4000 mm, connectable on request

Material

Cassette plate, roller shoes,
Rail body: aluminum, anodized
Raceways: corrosion resistant steel
Rollers: corrosion resistant bearing steel

Operating temperature

-20 °C to +80 °C

Maximum speed

10 m/s

Maximum acceleration

40 m/s²

Mounting position

Any

Lubricant

Lifetime-lubricated, maintenance-free

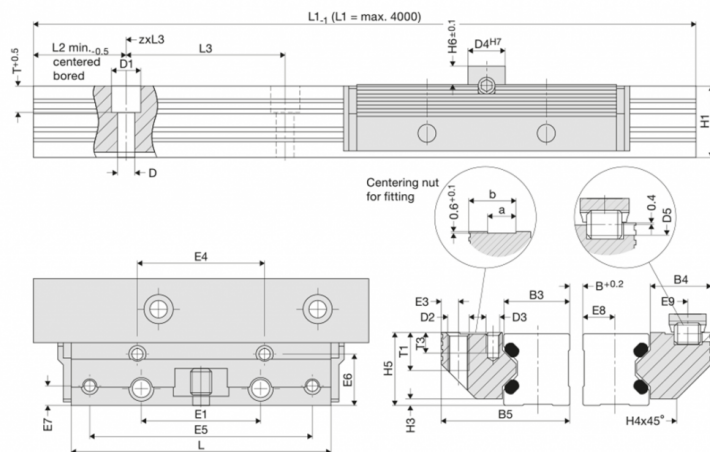
Linear guides Type FDC-R

Pair of single rails and

Pair of Roller Shoes

Non-corrosive

Data tables



FDC-R

Size	Dimensions mm														
	L	B5	H5	B3	B4	D3	D	D1	D2	D4	D5	E1	E3	E4	E5
12	64	24,4	15,0	12,00	11,9	M 3	3,4	6	M 4	8	3	25	3,4	29	57
15	78	30,9	19,0	15,25	15,2	M 4	4,5	8	M 5	10	4	30	4,4	34	68
20	92	40,9	23,0	20,00	20,4	M 5	5,5	10	M 6	10	4	40	4,9	42	80
25	98	48,4	27,5	25,00	22,9	M 5	6,6	11	M 8	14	6	45	6,4	48	84
35	135	68,9	37,5	35,00	32,9	M 6	9,0	15	M 10	14	6	62	8,9	67	117
45	165	82,4	46,5	45,00	36,4	M 8	11,0	18	M 12	14	6	80	9,9	83	146

FDC-R

Size	Dimensions mm													
	E6	E7	E8	E9	H1	H3	H4	H6	L3	T	T3	a	b	
12	9,7	3,4	5,5	4,9	14,7	1,4	5,5	4	40	5,5	6,0	4,5	9,5	
15	12,4	4,9	7,0	5,9	18,7	2,0	8,0	5	60	6,0	7,5	5,0	12,5	
20	16,9	5,9	9,5	5,9	22,6	2,0	11,0	5	60	8,0	8,0	7,5	16,0	
25	19,4	7,4	12,0	8,9	27,0	2,5	13,0	7	60	10,0	5,0	10,5	17,5	
35	28,4	8,9	17,0	8,9	37,0	3,5	20,0	7	80	11,5	8,5	12,5	26,0	
45	30,9	9,9	22,0	8,9	46,0	4,0	22,0	7	105	14,5	9,5	15,5	31,0	

Linear guides Type FDC-R

Pair of single rails and Pair of Roller Shoes

Non-corrosive

Innovation in Motion



Basic load ratings, weight, length

Size	Load ratings N		Moment capacities pair of roller shoes Nm				Weight kg		Order no.
	C	C ₀	M _{0cx}	M _{cx}	M _{0cy} /M _{0cz}	M _{cy} /M _{cz}	PRS	Rail/m	
12	1100	1200	0,6 (B+30,3)	0,6 (B+30,3)	17	16	0,07	0,40	84495AN
15	2700	3000	1,5 (B+36,5)	1,4 (B+36,5)	52	46	0,12	0,80	84395AN
20	4300	5000	2,5 (B+47,0)	2,2 (B+47,0)	103	89	0,23	1,20	84442AN
25	5800	8300	4,2 (B+58,4)	2,9 (B+58,4)	184	128	0,35	1,80	84367AN
35	10000	14500	7,3 (B+85,0)	5,0 (B+85,0)	452	312	1,00	3,10	84368AN
45	17000	20400	10,2 (B+109,0)	8,5 (B+109,0)	774	645	1,80	5,00	84369AN

Contact

Franke GmbH
Obere Bahnstraße 64
73431 Aalen - Germany

Tel. +49 7361 920-0
Fax +49 7361 920-120
info@franke-gmbh.de

DIN EN ISO 9001 QM
DIN EN ISO 14001 QM

Created: 04.07.2025