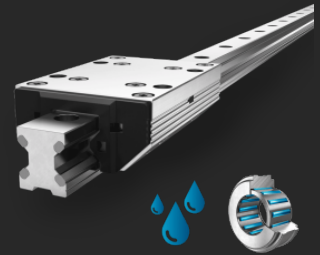


Linear Guides Type FDC-K

Double rail

Non-corrosive



FDC aluminum roller guides are insensitive to harsh environmental conditions.

Description

Franke FDC linear guides are equipped with very quiet, smooth-running, high-quality needle bearings and are made almost entirely of lightweight aluminum. Inlaid raceways made of corrosion-resistant steel make them insensitive to environmental influences as well as moisture or cleaning agents. Rail elements can be manufactured in a length of 200 mm to 4000 mm and, on request, can also be linked endlessly.

Characteristics

Rollers	Needle bearing
Raceway	NIRO Steel

Properties

Resilience	● ● ● ●
Dynamics	● ● ● ●
Corrosion resistant	● ● ● ● ●
Non magnetic	●
Lubricant free	●
Price	● ●

Technical data

Stroke length

One piece from 200 mm to 4000 mm, connectable on request

Material

Cassette plate, roller shoes,
Rail body: aluminum, anodized
Raceways: corrosion resistant steel
Rollers: corrosion resistant bearing steel

Operating temperature

-20 °C to +80 °C

Maximum speed

10 m/s

Maximum acceleration

40 m/s²

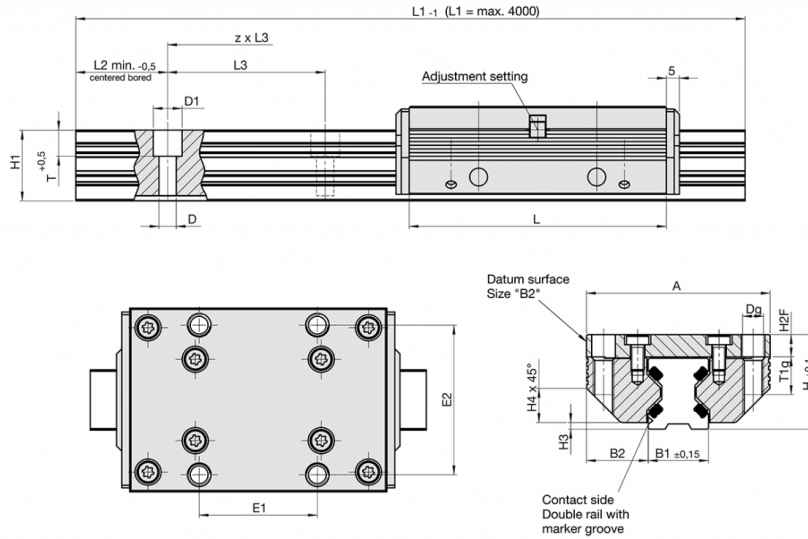
Mounting position

Any

Lubricant

Lifetime-lubricated, maintenance-free

Data tables



FDC-K

Size	Dimensions mm									
	A	L	H	B1	B2	D	D1	Dg	E1	
12	37	64	19	12,00	12,50	3,4	6	M 4	25	
15	47	78	24	15,50	15,75	4,5	8	M 5	30	
20	63	92	30	21,00	21,00	5,5	10	M 6	40	
25	70	98	36	23,00	23,50	6,6	11	M 8	45	
35	100	135	48	32,00	34,00	9,0	15	M 10	62	
45	120	165	60	45,00	37,50	11,0	18	M 12	80	

FDC-K

Size	Dimensions mm									
	E2	H1	H2F	H3	H4	L2	L3	T	T1g	
12	30	14,7	4,0	1,4	5,5	10	40	5,5	8	
15	38	18,7	5,0	2,0	8,0	10	60	6,0	10	
20	53	22,6	7,0	2,0	11,0	10	60	8,0	12	
25	57	27,0	8,5	2,5	13,0	10	60	10,0	16	
35	82	37,0	10,5	3,5	20,0	12	80	11,5	20	
45	100	46,0	13,5	4,0	22,0	16	105	14,5	24	

Linear Guides Type FDC-K

Double rail

Non-corrosive

Innovation in Motion



Basic load ratings, weight, length

Size	Load ratings		Moment capacities cassette				Weight		Order no.
	N		Nm				kg		
	C	C ₀	M _{0cx}	M _{cx}	M _{0cy} /M _{0cz}	M _{cy} /M _{cz}	Cassette	Rail/m	
12	1100	1200	11,0	10,0	17,0	16,0	0,09	0,40	84494AN
15	2700	3000	33,0	29,0	52,0	46,0	0,17	0,80	84396AN
20	4300	5000	71,0	61,0	103,0	89,0	0,35	1,30	84441AN
25	5800	8300	132,0	92,0	184,0	128,0	0,50	1,60	84363AN
35	10000	14500	343,0	237,0	452,0	312,0	1,40	2,60	84364AN
45	17000	20400	651,0	542,0	774,0	645,0	2,50	4,50	84365AN

Contact

Franke GmbH
 Obere Bahnstraße 64
 73431 Aalen - Germany

Tel. +49 7361 920-0
 Fax +49 7361 920-120
 info@franke-gmbh.de

DIN EN ISO 9001 QM
 DIN EN ISO 14001 QM

Created: 04.07.2025