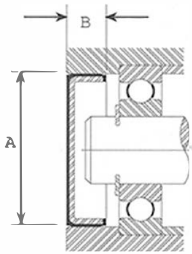


# ExcluderSeals® Bore Plugs

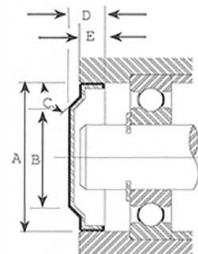
Note: Tables are arranged by housing bore size, -A-



## CPZ

Bore Plugs are designed to seal the open housing bore and provide easy future access to the shaft. Greases are retained, and contaminants are excluded. The rubber covered outside diameter permits use in housing bores of varying finish.

Clark Seal® Part Number	Housing Bore -A-	Plug Width -B-	Clark Seal® Part Number	Housing Bore -A-	Plug Width -B-
CPZ-.503-.100	.503/12.78 mm	.100/2.54 mm	CPZ-3.375-.080	3.375/85.73 mm	.080/2.03 mm
CPZ-.750-.125†	.750/19.05 mm	.125/3.17 mm	CPZ-3.375-.125	3.375/85.73 mm	.125/3.17 mm
CPZ-.875-.125†	.875/22.22 mm	.125/3.17 mm	CPZ-3.500-.375	3.375/85.73 mm	.375/9.53 mm
CPZ-1.000-.125†	1.000/25.40 mm	.115/3.17 mm	CPZ-30-8	30.00 mm/1.181	8.00 mm/.315
CPZ-1.250-.250	1.250/31.75 mm	.250/6.35 mm	CPZ-35-3.5	35.00 mm/1.378	3.50 mm/.138
CPZ-1.250-.188	1.250/31.75 mm	.188/4.78 mm	CPZ-38-10	38.00 mm/1.496	10.0 mm/.394
CPZ-1.500-.187	1.500/38.10 mm	.187/4.75 mm	CPZ-40-2.54	40.00 mm/1.575	2.54 mm/.100
CPZ-1.500-.250	1.500/38.10 mm	.250/6.35 mm	CPZ-40-7	40.00 mm/1.575	7.00 mm/.276
CPZ-1.562-.250	1.562/39.67 mm	.250/6.35 mm	CPZ-40-8	40.00 mm/1.575	8.00 mm/.315
CPZ-1.783-.250	1.783/45.29 mm	.250/6.35 mm	CPZ-47-5	47.00 mm/1.850	5.00 mm/.197
CPZ-1.810-.250	1.810/45.97 mm	.250/6.35 mm	CPZ-47-8	47.00 mm/1.850	8.00 mm/.315
CPZ-2.000-.250	2.000/50.80 mm	.250/6.35 mm	CPZ-47-10	47.00 mm/1.850	10.00 mm/.394
CPZ-2.125-.312	2.125/53.98 mm	.312/7.92 mm	CPZ-52-6.35	52.00 mm/2.047	6.35 mm/.250
CPZ-2.312-.313	2.312/58.72 mm	.313/7.95 mm	CPZ-52-8	52.00 mm/2.047	8.00 mm/.315
CPZ-2.441-.250	2.441/62.00 mm	.250/6.35 mm	CPZ-52-10	52.00 mm/2.047	10.00 mm/.394
CPZ-2.441-.375	2.441/62.00 mm	.375/9.53 mm	CPZ-72-9	72.00 mm/2.835	9.00 mm/.354
CPZ-2.501-.312	2.501/63.53 mm	.312/7.92 mm	CPZ-80-12	80.00 mm/3.150	12.00 mm/.472
CPZ-2.623-.313	2.623/66.62 mm	.313/7.95 mm	CPZ-90-12	90.00 mm/3.543	12.00 mm/.472
CPZ-2.756-.312	2.756/70.00 mm	.312/7.92 mm	CPZ-150-18	150.00 mm/5.906	18.00 mm/.709
CPZ-3.254-.250	3.254/82.65 mm	.250/6.35 mm			



## CPE

The CPE offers the same features as the standard CPZ Bore Plugs with the additional feature to accommodate extended shafts.

Clark Seal® Part Number	Housing Bore -A-	Top Dia. -B-	Top Angle -C-	Seal Width -D-	Width at O.D. -E-
CPE-1.000-.630	1.000/25.40 mm	.750	10° max.	.630/16.00 mm	.250/6.35 mm
CPE-1.250-.630	1.250/31.75 mm	1.000	5° max.	.630/16.00 mm	.250/6.35 mm
CPE-1.499-.750	1.499/38.07 mm	1.250	5° max.	.750/19.05 mm	.375/9.53 mm
CPE-1.625-.750	1.625/41.28 mm	1.375	5° max.	.750/19.05 mm	.375/9.53 mm
CPE-1.875-.750	1.875/47.63 mm	1.433	15° max.	.750/19.05 mm	.375/9.53 mm
CPE-2.000-.750	2.000/50.80 mm	1.625	10° max.	.750/19.05 mm	.375/9.53 mm
CPE-2.250-.750	2.250/57.15 mm	1.940	10° max.	.750/19.05 mm	.375/9.53 mm
CPE-2.374-.750	2.374/60.30 mm	1.940	5° max.	.750/19.05 mm	.375/9.53 mm
CPE-2.502-.750	2.502/63.55 mm	2.062	10° max.	.750/19.05 mm	.375/9.53 mm
CPE-2.875-.880	2.875/73.03 mm	2.448	15° max.	.880/22.35 mm	.500/12.70 mm
CPE-3.124-.880	3.124/79.35 mm	2.690	5° max.	.880/22.35 mm	.500/12.70 mm
CPE-3.150-.750	3.150/80.01 mm	2.606	45° max.	.750/19.05 mm	.375/9.53 mm

† Non-Standard Size