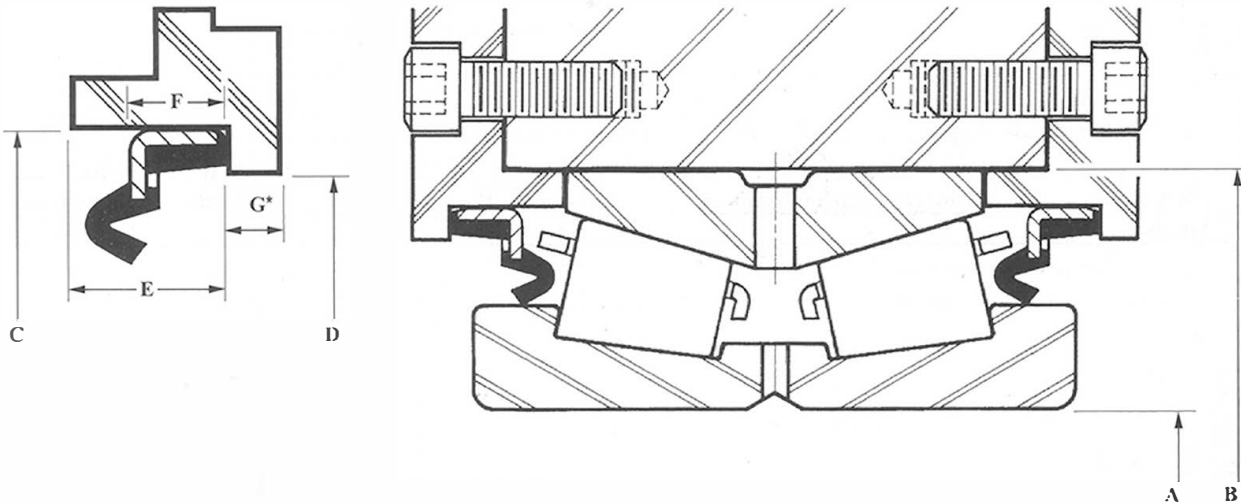


ExcluderSeals® 6000 Series Dimensions Specifications

The 6000 series seals are used in applications where excessive thrust load (fleet angle) could exceed the press fit of the bearing cup in the housing (sheave) bore. A machined metal ring provides a shoulder to positively retain the cup. The 6000 series seal is designed to work with the machined ring to

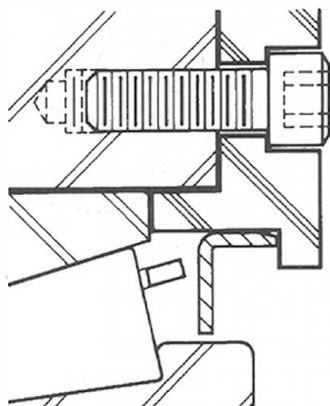
retain bearing grease and provide maximum protection from contaminants. The 6000 series Sheave Seal® is available in CA, CE, and CS types. These seals are used on marine docks and aboard ships where the heavy loads swivel and shift.



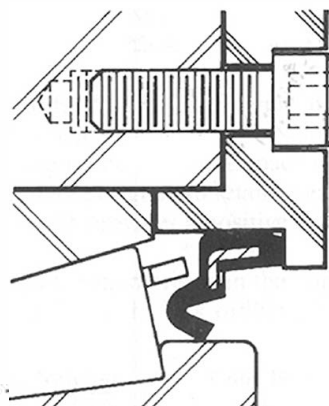
Note: Listed by cone bore size, -A-

Clark Seal® Number	Timken® Part Number		Cone Bore -A-	Cup O.D. -B-	Seal Hsg. -C-	Max. Shoulder Dia. -D-	Counter Bore Depth -E-	Seal Heel Width -F-
	Cone	Cup						
CE-6009	NA56425SW	56650D	4.2500	6.5000	6.250	6.000	.812	.375
CA-6011	NA48685SW	48620D	5.6250	7.8750	7.600	7.350	.593	.313
CE-6016	LM241149NW	LM241110D	8.0000	10.8750	10.500	10.250	.690	.375
CS-6021	LM249747NW	LM249710D	10.0000	13.6875	13.100	12.850	1.000	.625
CA-6024	L357049NW	L357010D	12.0000	15.5000	14.950	14.700	.812	.437

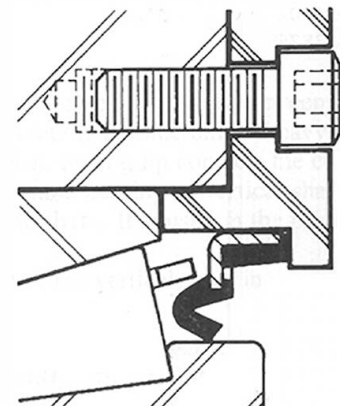
* -G- Minimum Shoulder Width: .125"



CA-6000



CE-6000



CS-6000