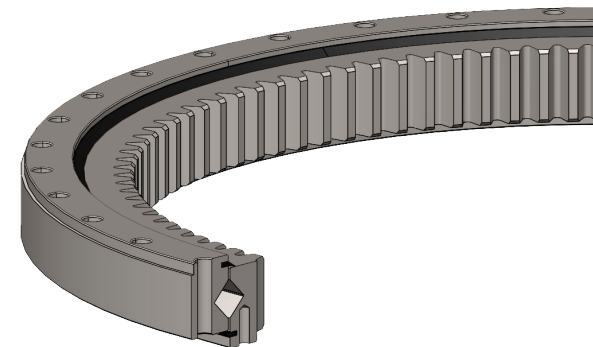
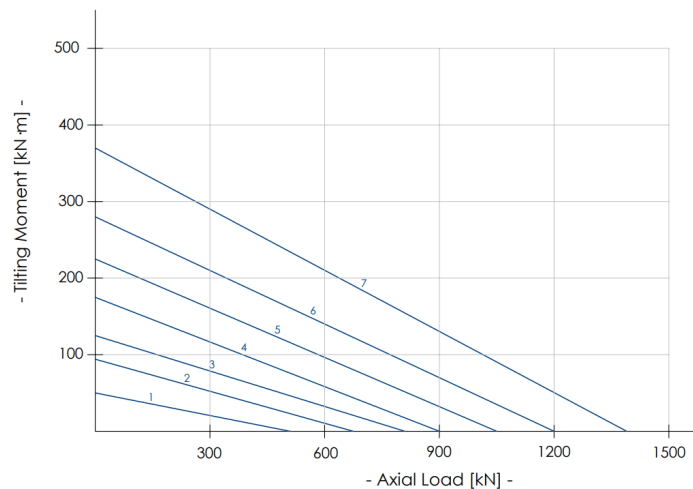
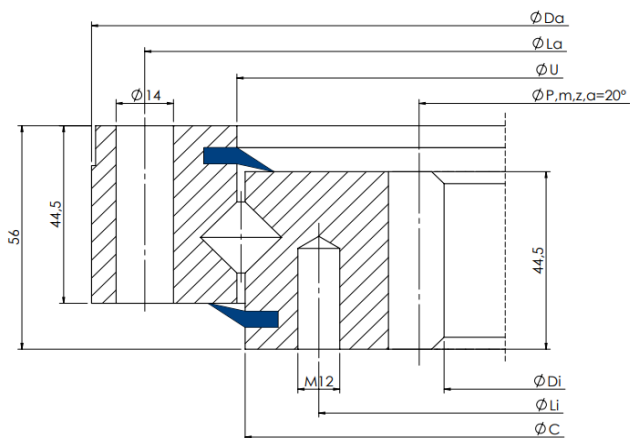


I 14.00.B.R-ZT

Cross row version, rollers $\varnothing 14$ mm, internal geared, through holes



Slewing Ring Type	Dimensions				Fixing holes				Gear			Tooth Force		Static		Dynamic		Mass
	Da +1T7 mm	U mm	C +1T7 mm	Di mm	La mm	na n°	Li mm	ni n°	P mm	m	z n°	Fz nor. kN	Fz max. kN	Coa (kN)	Mr (kN·m)	Ca (kN)	Cr (kN)	Weight kg
1 I.486.14.00.B.R-ZT	484	415.5	411	325	460	24	375	24	335	5	67	17.7	24.7	656	59	197	128	31
2 I.616.14.00.B.R-ZT	614	545.5	541	444	590	32	505	32	456	6	76	21.4	30	918	108	218	142	42
3 I.716.14.00.B.R-ZT	714	645.5	641	546	690	36	605	36	558	6	93	21.4	30	1022	143	233	151	50
4 I.816.14.00.B.R-ZT	814	745.5	741	648	790	40	705	40	660	6	110	21.4	30	1186	191	246	160	58
5 I.916.14.00.B.R-ZT	914	845.5	841	736	890	40	805	40	752	8	94	28.5	39.9	1349	246	258	167	69
6 I.1016.14.00.B.R-ZT	1014	945.5	941	840	990	44	905	44	856	8	107	28.5	39.9	1513	308	269	174	76
7 I.1166.14.00.B.R-ZT	1164	1095.5	1091	984	1140	48	1055	48	1000	8	125	28.5	39.9	1834	431	284	184	91