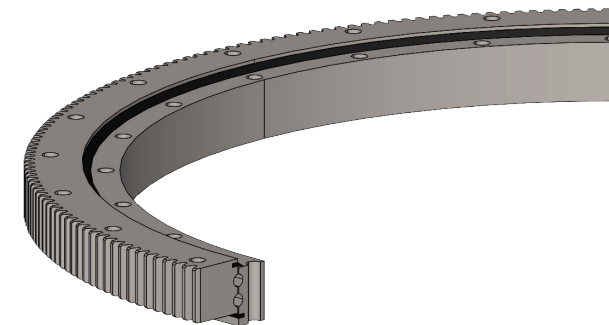
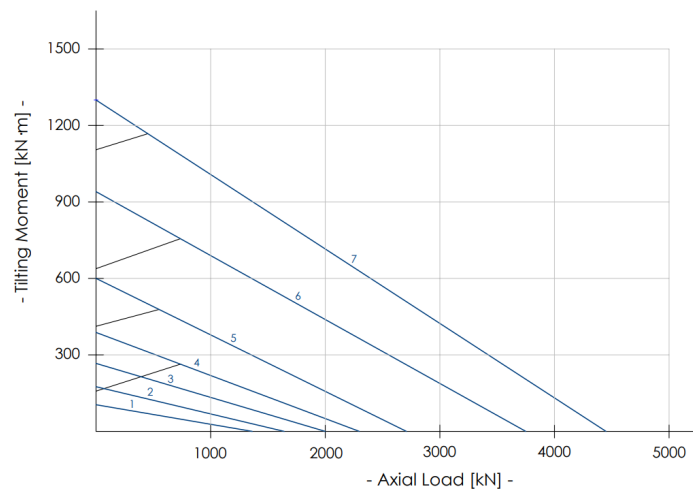
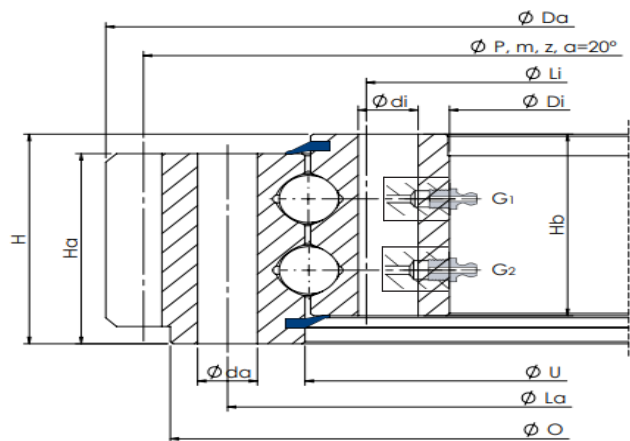


E 2.XX.00.D

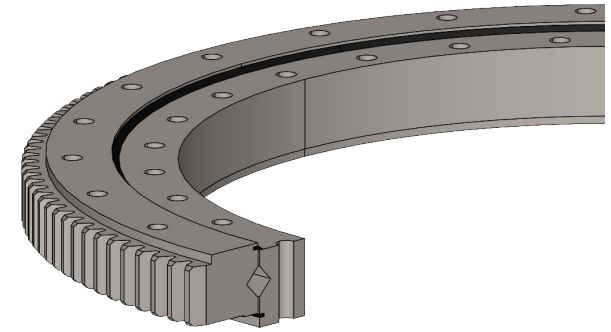
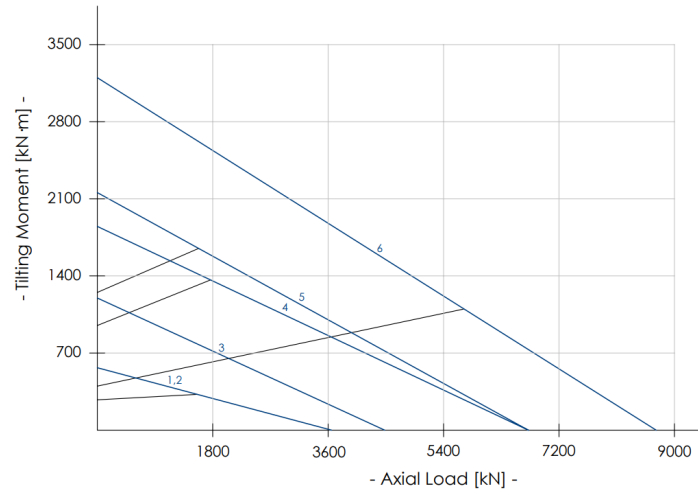
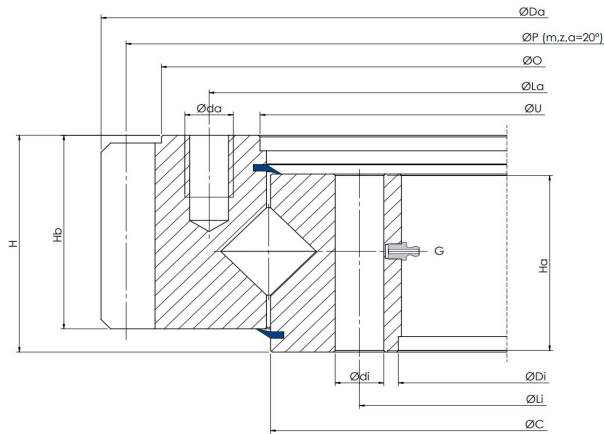
Double row version, double ball different \emptyset in mm, external geared, special holes



Slewing Ring Type	Dimensions							Fixing holes					Gear			Tooth Force		Mass		
	Da mm	O mm	U mm	Di mm	Ha mm	Hb mm	H mm	La mm	na n°	da mm	Li mm	ni n°	di mm	P mm	m	z n°	Fz nor. kN	Fz max. kN	Weight kg	
1	E.504.2.25.00.D.6	504	466	387	300	75	87	95	436	16	17	330	16	17	488	8	61	31	62	65
2	E.608.2.25.10.D.6	608	570	487	382	78	87	95	540	24	17	410	24	17	592	8	74	40	80	84
3	E.712.2.25.12.D.6	712	670	577	470	75	88	98	640	24	17	508	24	20	696	8	87	41	82	103
4	E.1079.2.20.12.D.3-V	1079	972	972	893	70	80	90	1015	30	M16	922	30	18	1048	8	131	42	84	140
5	E.1080.2.22.00.D.6	1080	1042	970	893	76	83	92	1015	30	17	992	30	17	1064	8	133	32	64	150
6	E.1200.2.25.00.D.1	1200	1163	1079	976	77	88	98	1135	36	19	1012	36	19	1184	8	148	32	64	210

E XX.00.D-RV

Cross row version, different rollers \emptyset in mm, external geared, special holes



Slewing Ring Type	Dimensions							Fixing holes					Gear			Tooth Force		Mass	
	Da mm	O mm	U mm	Di mm	Ha mm	Hb mm	H mm	La mm	na n°	da mm	Li mm	ni n°	di mm	P mm	m	z n°	Fz nor. kN	Fz max. kN	Weight kg
1 E.1144.30.12.D.1-RV	1144	1090	993	870	84	67	100	1050	18	22	910	SC*	22	1110	10	111	58	116	230
2 E.1144.30.12.D.3-RV	1144	1090	993	870	84	67	100	1050	SC*	22	910	SC*	22	1122	11	102	60	120	230
3 E.1390.30.15.D.1-R	1390	1237	1237	1115	89	85	105	1290	30	M20	1150	30	22	1368	12	114	82	164	329
4 E.1476.45.15.D.1-RV	1476	1415	1252.5	1085	100	77	110	1350	24	26	1150	28	26	1440	10	144	68	136	475
5 E.1604.50.10.D.1-RV	1604	1550	1394	1208	116	75	128	1500	24	29	1280	SC*	29	1570	10	157	55	110	606
6 E.1805.45.17.D.3-R	1805	1730	1608	1437	120	115	140	1671	60	M27	1485	60	30	1744	16	109	167	334	750

SC* = Drilling not equi-spaced