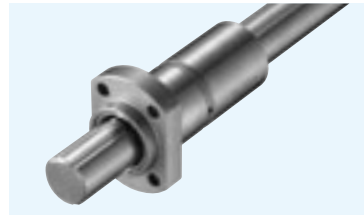
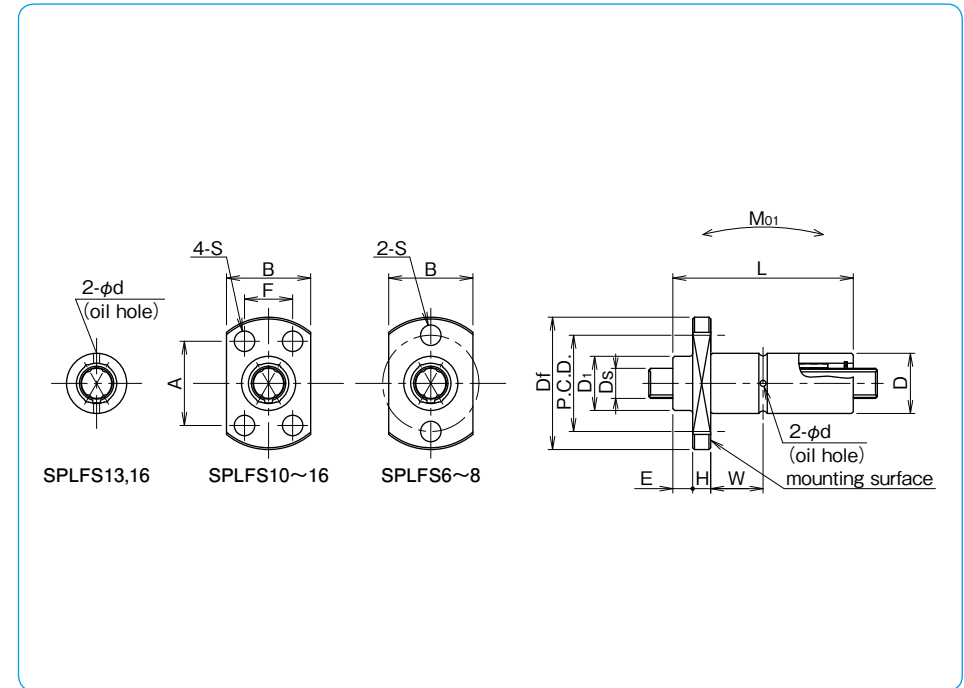
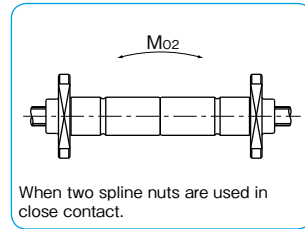
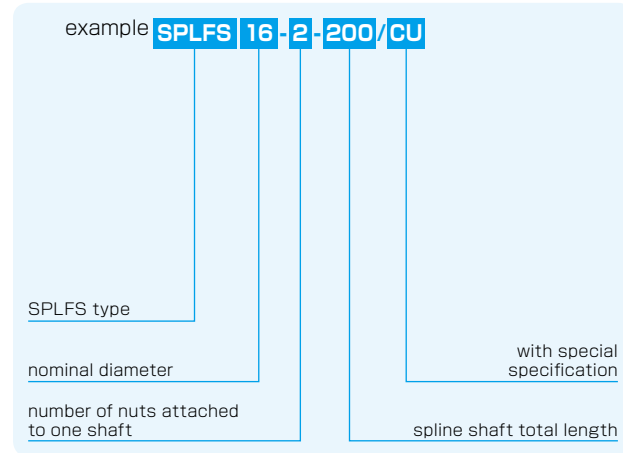


SPLFS TYPE

– Two Side Cut Flange Type –



part number structure



part number	maximum stroke		D tolerance μm	D ₁		L tolerance mm	major dimensions						
	mm	mm		mm	mm		E	D _f	H	B	P.C.D.	A	F
SPLFS 6	22	11	0	10	40	-0.2	3.3	23	4	14	17	—	—
SPLFS 8	20	13		12.5	40		3.3	25.5	4	16	19.5	—	—
SPLFS 10	28	16	-8	15.5	50	3.3	28.5	5	20	—	18	13	
SPLFS 13	24	20	0	19.5	50	4.8	36	5	25	—	22	17	
SPLFS 16	26	24	-9	23.5	60	4.8	40	7	29	—	25	19	

S	W	d	D _s tolerance μm	basic torque rating		basic load rating		allowable static moment		mass		size	
				dynamic C _T N·m	static C _{0T} N·m	dynamic C kN	static C ₀ kN	M _{O1} N·m	M _{O2} N·m	nut g	shaft kg/m		
3.4	12.7	1.2	6	0/-12	2.3	3.8	1.8	3.0	11.2	45	21.5	0.21	6
3.4	12.7	1.2	8	0	3.3	5.5	2.02	3.37	13.1	52	27.0	0.38	8
3.4	16.7	1.5	10	-15	6.5	10.9	3.21	5.35	25.6	102	47.7	0.6	10
3.4	15.2	1.5	13	0	27.6	50.7	4.15	7.6	38.8	155	75.3	1.0	13
4.5	18.2	2.0	16	-18	62.8	115	7.66	14	88.3	353	123.5	1.5	16

1kN≐102kgf 1N·m≐0.102kgf·m