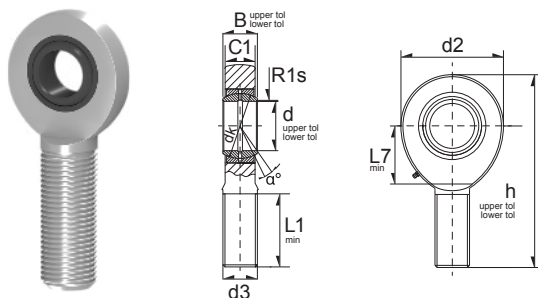


# Wartungspflichtige Gelenkköpfe / Rod Ends (RM)



(MF) = Maintenance Free  
(RM) = Requiring Maintenance



8

| Ref      | Dimension (mm) |    |       |    |     |    |      |         |      |     |    |    | α° | *Load Rating |            | Weight (g) approx. |
|----------|----------------|----|-------|----|-----|----|------|---------|------|-----|----|----|----|--------------|------------|--------------------|
|          | d              | d2 | L2    | B  | C1  | D  | d1   | d3      | Dk   | h   | L1 | L7 |    | C, dyn. N    | C, stat. N |                    |
| GAR6-DO  | 6              | 21 | 46.5  | 6  | 4.4 | 14 | 8    | M6      | 10   | 36  | 18 | 12 | 13 | 3060         | 6237       | 18 g               |
| GAR8-DO  | 8              | 24 | 54    | 8  | 6   | 16 | 10.2 | M8      | 13   | 42  | 22 | 14 | 15 | 5031         | 11610      | 33 g               |
| GAR10-DO | 10             | 29 | 62.5  | 9  | 7   | 19 | 13.2 | M10     | 16   | 48  | 26 | 15 | 12 | 7344         | 18540      | 56 g               |
| GAR12-DO | 12             | 34 | 71    | 10 | 8   | 22 | 14.9 | M12     | 18   | 54  | 28 | 18 | 11 | 9720         | 27180      | 86 g               |
| GAR15-DO | 15             | 40 | 83    | 12 | 10  | 26 | 18.4 | M14     | 22   | 63  | 34 | 20 | 8  | 15210        | 37440      | 150 g              |
| GAR17-DO | 17             | 46 | 92    | 14 | 11  | 30 | 20.7 | M16     | 25   | 69  | 36 | 23 | 10 | 19170        | 50850      | 210 g              |
| GAR20-DO | 20             | 53 | 104.5 | 16 | 13  | 35 | 24.2 | M20X1,5 | 29   | 78  | 43 | 27 | 9  | 26640        | 68040      | 330 g              |
| GAR25-DO | 25             | 64 | 126   | 20 | 17  | 42 | 29.3 | M24X2   | 35.5 | 94  | 53 | 32 | 7  | 43470        | 79470      | 600 g              |
| GAR30-DO | 30             | 73 | 146.5 | 22 | 19  | 47 | 34.2 | M30X2   | 40.7 | 110 | 65 | 37 | 6  | 56070        | 107100     | 950 g              |

| Ref      | Dimension (mm) |    |       |    |     |    |      |         |      |     |    |    | α° | *Load Rating |            | Weight (g) approx. |
|----------|----------------|----|-------|----|-----|----|------|---------|------|-----|----|----|----|--------------|------------|--------------------|
|          | d              | d2 | L2    | B  | C1  | D  | d1   | d3      | Dk   | h   | L1 | L7 |    | C, dyn. N    | C, stat. N |                    |
| GAL6-DO  | 6              | 21 | 46.5  | 6  | 4.4 | 14 | 8    | M6      | 10   | 36  | 18 | 12 | 13 | 3060         | 6237       | 18 g               |
| GAL8-DO  | 8              | 24 | 54    | 8  | 6   | 16 | 10.2 | M8      | 13   | 42  | 22 | 14 | 15 | 5031         | 11610      | 33 g               |
| GAL10-DO | 10             | 29 | 62.5  | 9  | 7   | 19 | 13.2 | M10     | 16   | 48  | 26 | 15 | 12 | 7344         | 18540      | 56 g               |
| GAL12-DO | 12             | 34 | 71    | 10 | 8   | 22 | 14.9 | M12     | 18   | 54  | 28 | 18 | 11 | 9720         | 27180      | 86 g               |
| GAL15-DO | 15             | 40 | 83    | 12 | 10  | 26 | 18.4 | M14     | 22   | 63  | 34 | 20 | 8  | 15210        | 37440      | 150 g              |
| GAL17-DO | 17             | 46 | 92    | 14 | 11  | 30 | 20.7 | M16     | 25   | 69  | 36 | 23 | 10 | 19170        | 50850      | 210 g              |
| GAL20-DO | 20             | 53 | 104.5 | 16 | 13  | 35 | 24.2 | M20X1,5 | 29   | 78  | 43 | 27 | 9  | 26640        | 68040      | 330 g              |
| GAL25-DO | 25             | 64 | 126   | 20 | 17  | 42 | 29.3 | M24X2   | 35.5 | 94  | 53 | 32 | 7  | 43470        | 79470      | 600 g              |
| GAL30-DO | 30             | 73 | 146.5 | 22 | 19  | 47 | 34.2 | M30X2   | 40.7 | 110 | 65 | 37 | 6  | 56070        | 107100     | 950 g              |