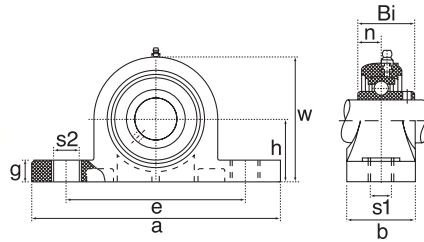
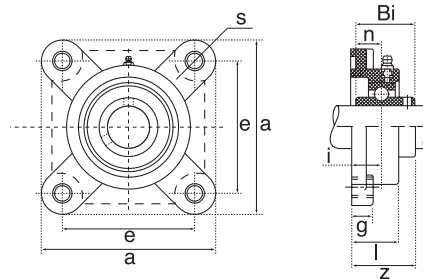


Thermoplastische Gehäuse / Thermoplastic Pillow Blocks



11

Ref Type	h	a	e	b	s1	s2	g	w	Bi	n	Weight Kg	Bearing No.
TP201	33.3	127.0	95.0	38.0	11.0	14.0	14.2	65.6	31.0	12.7	0.12 kg	SUC201
TP202	33.3	127.0	95.0	38.0	11.0	14.0	14.2	65.6	31.0	12.7	0.12 kg	SUC202
TP203	33.3	127.0	95.0	38.0	11.0	14.0	14.2	65.6	31.0	12.7	0.12 kg	SUC203
TP204	33.3	127.0	95.0	38.0	11.0	14.0	14.2	65.6	31.0	12.7	0.12 kg	SUC204
TP205	36.5	140.6	105.0	38.0	11.0	14.0	14.5	71.0	34.0	14.3	0.14 kg	SUC205
TP206	42.9	163.0	118.0	46.0	14.0	18.0	17.8	84.0	38.1	15.9	0.20 kg	SUC206
TP207	47.6	168.0	127.0	48.0	14.0	18.0	18.0	94.5	42.9	17.5	0.25 kg	SUC207
TP208	49.2	184.0	137.0	54.0	14.0	18.0	19.5	101.0	49.2	19.0	0.35 kg	SUC208
TP209	54.0	192.0	146.0	54.0	17.0	20.0	23.0	106.0	49.2	19.0	0.45 kg	SUC209
TP210	57.2	206.0	159.0	60.0	17.0	20.0	23.0	114.0	51.6	19.0	0.55 kg	SUC210
TP211	63.5	219.0	171.0	60.0	20.0	23.0	23.0	127.0	55.6	22.2	1.38 kg	SUC211
TP212	69.5	241.0	184.0	70.0	20.0	23.0	25.0	138.0	65.1	25.4	1.52 kg	SUC212



Ref Type	a	e	g	l	s	z	i	Bi	n	Weight Kg	Bearing No.
TF201	86.0	63.5	13.4	27.8	11.0	34.6	18.0	31.0	12.7	0.12 kg	SUC201
TF202	86.0	63.5	13.4	27.8	11.0	34.6	18.0	31.0	12.7	0.12 kg	SUC202
TF203	86.0	63.5	13.4	27.8	11.0	34.6	18.0	31.0	12.7	0.12 kg	SUC203
TF204	86.0	63.5	13.4	27.8	11.0	34.6	18.0	31.0	12.7	0.12 kg	SUC204
TF205	95.0	70.0	14.0	28.0	11.0	36.7	17.0	34.0	14.3	0.15 kg	SUC205
TF206	107.0	83.0	14.3	31.5	11.0	41.2	19.2	38.1	15.9	0.18 kg	SUC206
TF207	118.0	92.0	15.5	34.8	13.0	46.9	21.5	42.9	17.5	0.26 kg	SUC207
TF208	130.0	102.0	17.0	37.5	14.0	53.2	23.0	49.2	19.0	0.33 kg	SUC208
TF209	137.0	105.0	19.0	41.0	17.0	54.2	24.0	49.2	19.0	0.42 kg	SUC209
TF210	143.0	111.0	21.0	43.0	17.0	57.6	25.0	51.6	19.0	0.51 kg	SUC210
TF211	162.0	130.0	20.0	43.0	19.0	58.4	25.0	55.6	22.2	1.40 kg	SUC211
TF212	175.0	143.0	20.0	48.0	19.0	68.7	29.0	65.1	25.4	1.60 kg	SUC212

Dimensions are accurate at the time of document creation but may vary