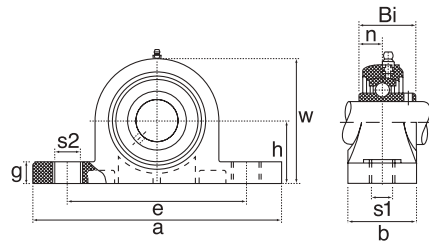
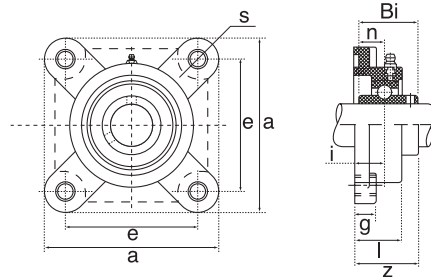
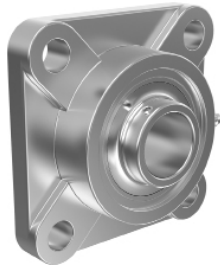


Rostfreie Gehäuse / Stainless Steel Pillow Blocks



7

Ref. Type	d	h	a	e	b	S1	S2	g	w	Weight (kg)	Bearing No.
SP201	20.0	33.3	125.0	95.0	37.0	13.0	19.0	14.0	63.5	0.69 kg	SUC201
SP202	20.0	33.3	125.0	95.0	37.0	13.0	19.0	14.0	63.5	0.69 kg	SUC202
SP203	20.0	33.3	125.0	95.0	37.0	13.0	19.0	14.0	63.5	0.69 kg	SUC203
SP204	20.0	33.3	125.0	95.0	37.0	13.0	19.0	14.0	63.5	0.69 kg	SUC204
SP205	25.0	36.5	140.0	105.0	37.0	13.0	19.0	15.0	71.0	0.74 kg	SUC205
SP206	30.0	42.9	163.0	121.0	48.0	17.0	20.0	17.0	82.0	1.29 kg	SUC206
SP207	35.0	47.6	167.0	127.0	48.0	17.0	20.0	18.0	93.0	1.42 kg	SUC207
SP208	40.0	49.2	184.0	137.0	54.0	17.0	20.0	18.0	100.0	1.82 kg	SUC208
SP209	45.0	54	190.0	146.0	54.0	17.0	20.0	20.0	106.0	2.09 kg	SUC209
SP210	50.0	57.2	206.0	159.0	60.0	20.0	23.0	21.0	113.0	2.38 kg	SUC210
SP211	55.0	63.5	219.0	171.0	60.0	20.0	23.0	23.0	125.0	2.55 kg	SUC211
SP212	60.0	69.8	241.0	184.0	70.0	20.0	23.0	25.0	138.0	3.40 kg	SUC212



Ref Type	d	a	e	i	l	g	s	z	Weight Kg	Bearing No.
SF201	20.0	86.0	63.5	15.1	25.4	12.0	12.0	33.3	0.47 kg	SUC201
SF202	20.0	86.0	63.5	15.1	25.4	12.0	12.0	33.3	0.47 kg	SUC202
SF203	20.0	86.0	63.5	15.1	25.4	12.0	12.0	33.3	0.47 kg	SUC203
SF204	20.0	86.0	63.5	15.1	25.4	12.0	12.0	33.3	0.47 kg	SUC204
SF205	25.0	95.0	70.0	15.9	27.0	14.0	12.0	35.8	0.65 kg	SUC205
SF206	30.0	108.0	82.5	17.9	30.0	14.0	12.0	40.2	0.85 kg	SUC206
SF207	35.0	117.0	92.0	19.1	33.0	16.0	14.0	44.4	1.03 kg	SUC207
SF208	40.0	130.0	101.6	21.0	36.0	16.0	16.0	51.2	1.38 kg	SUC208
SF209	45.0	137.0	104.8	21.8	37.0	16.0	16.0	52.2	1.50 kg	SUC209
SF210	50.0	143.0	111.0	21.8	38.0	18.0	16.0	54.6	1.63 kg	SUC210
SF211	55.0	162.0	130.0	25.0	43.0	20.0	19.0	58.4	3.25 kg	SUC211
SF212	60.0	175.0	143.0	29.0	48.0	20.0	19.0	68.7	4.20 kg	SUC212

Dimensions are accurate at the time of document creation but may vary