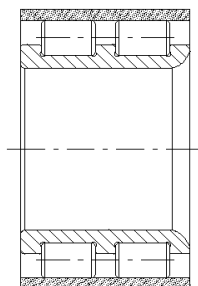
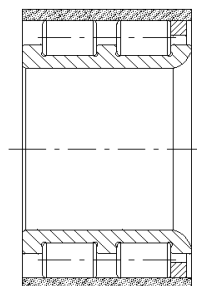


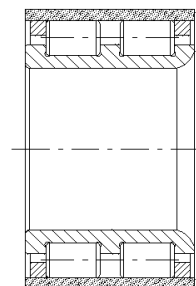
**TYPE A**  
2 flange rings  
+ 1 snap ring



**TYPE B**  
without flange rings



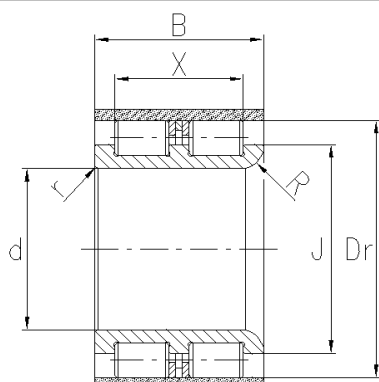
**TYPE C**  
1 side ring



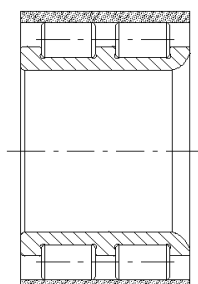
**TYPE D**  
2 side rings

DO NOT USE THESE DRAFT DRAWINGS TO ORDER BEARINGS.  
ASK CPM TECHNICAL SERVICE FOR DETAILED DRAWINGS  
AND FOR DIFFERENT DIMENSIONS OR TYPES.

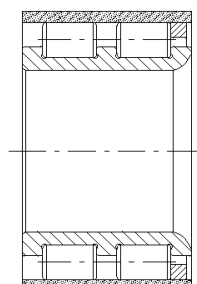
d	Dr	B	J	X	R min.	r min.	BASIC DYNAMIC RADIAL LOAD RATING Cr kN	BASIC STATIC RADIAL LOAD RATING Cor kN	TYPE	P / N
18	32,300	20,5	25,9	14,9	2,0	0,3	24,1	25,7	A	2699
22	36,200	30,0	30,8	23,0	2,5	0,7	47,5	68,8	A	2435
22	38,750	22,5	31,0	17,3	2,0	0,3	34,6	38,1	A	2535 - 2834
24	40,250	26,0	34,3	20,0	2,5	0,3	44,0	59,8	A	2400
24	40,250	34,0	34,3	24,0	2,0	2,0	53,3	76,4	A	2597
25	40,250	26,0	34,3	20,0	2,5	0,3	44,0	59,8	A	2686
25	40,250	32,0	34,3	24,0	3,0	0,3	53,3	76,4	A	2613
28	39,850	25,0	35,0 37,8	18,0	3,5	0,3	36,9	56,0	A	2908
28	43,350	26,5	37,3	20,0	3,0	0,3	46,6	66,1	A	2519
28	43,350	26,5	37,3	20,0	3,0	0,3	53,0	66,1	A	2883
28	43,400	32,0	37,4	24,0	3,0	0,3	56,6	83,6	A	2935
28	44,450	34,0	36,5	27,6	2,5	0,3	70,8	99,8	A	2776
30	46,400	32,0	38,7	27,6	2,0	0,3	73,2	105,7	A	2594
30	48,250	40,0	40,6	32,0	2,5	2,5	85,8	131,6	A	2687
30	49,600	26,0	38,6	20,0	3,0	0,3	57,0	70,3	D	2510



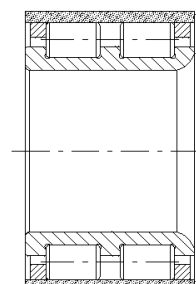
**TYPE A**  
2 flange rings  
+ 1 snap ring



**TYPE B**  
without flange rings



**TYPE C**  
1 side ring



**TYPE D**  
2 side rings

DO NOT USE THESE DRAFT DRAWINGS TO ORDER BEARINGS.  
ASK CPM TECHNICAL SERVICE FOR DETAILED DRAWINGS  
AND FOR DIFFERENT DIMENSIONS OR TYPES.

d	Dr	B	J	X	R min.	r min.	BASIC DYNAMIC RADIAL	BASIC STATIC RADIAL	TYPE	P / N
							LOAD RATING	LOAD RATING		
							Cr kN	Cor kN		
30	49,600	24,0	40,0	18,0	3,0	0,3	50,8	60,6	A	2178
30	49,600	25,0	40,0	18,9	3,0	0,3	50,8	60,6	A	2651
30	49,600	26,0	40,0	20,0	3,0	0,3	57,1	70,4	A	2198
30	49,600	30,0	40,0	24,0	2,6	0,3	69,1	90,0	A	2683
30	49,600	34,0	40,0	24,9	1,0	1,0	69,0	89,9	A	2872
30	49,600	34,0	40,0	26,0	1,0	1,0	69,0	89,9	D	2858
32	46,600	25,0	41,0	20,5	3,0	0,3	54,3	82,5	D	2508
32	46,600	28,0	41,0	22,0	3,0	0,3	54,3	82,5	A	2183 - 2439
32	48,240	34,0	41,0	27,6	2,5	0,3	76,0	112,0	A	2668
32	51,750	25,0	42,5	19,9	3,0	0,3	59,1	74,7	A	2496
32	51,750	29,0	42,5	24,0	3,0	0,3	71,5	95,5	A	2579
34	50,200	29,0	42,5	23,6	2,5	0,3	66,7	96,6	A	2634
35	49,800	28,0	43,9	22,0	3,0	0,3	56,8	89,7	A	2434
35	52,000	33,5	44,5	27,6	3,2	0,3	79,3	122,1	A	2932
35	52,090	26,5	44,5	20,9	2,5	0,3	56,6	79,4	A	2488 - 2723
35	52,090	26,5	44,5	21,2	2,5	0,3	63,0	90,0	A	2885