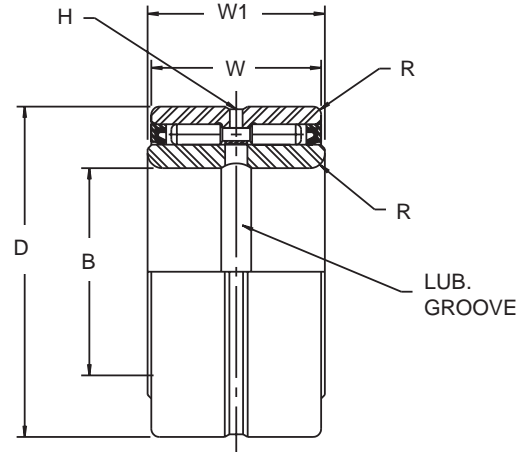


Outer ring and roller assembly with separate inner ring

Available in 5 seal combinations (see page 75 also)

For a complete bearing, specify both outer and inner, as each is packed and shipped separately. Consult McGill Engineering Department for additional information on GUIDEROL® bearing sizes not listed as available with seals. The suffix "SS" indicates double seals with lips turned in (illustrated at right). This construction is most common and is intended primarily for lubrication retention. For other seal combinations, see page 75.



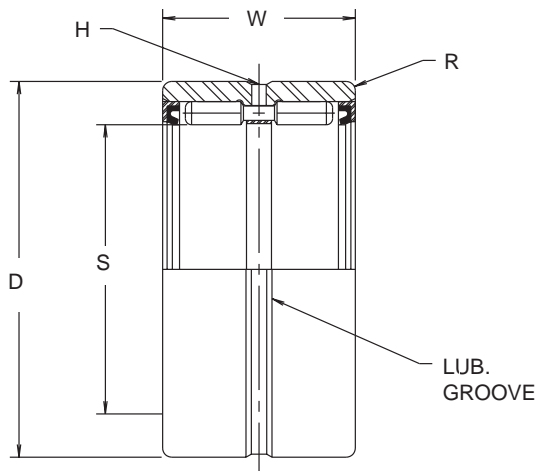
McGILL NUMBER outer ring & roller assy.	McGILL NUMBER inner ring only	B		D*		W	W1	H	R	SHAFT DIA.				HSG. BORE DIA.				STATIC LOAD RATING (LBS.)	BASIC DYNAMIC RATING (LBS.)
		+ .0000	TOL.	+ .0000	TOL.	+ .0000 -.0005	+ .0000 -.0005	HOLE DIA.	MAX. FILLET for shaft & hsg.	ROTAT. SHAFT	TOL. + .0000	STAT. SHAFT	TOL. + .0000	ROTAT. HSG.	TOL. + .0000	STAT. HSG.	TOL. + .0000		
GR-10-SS	MI-6	.3750	-.0004	1.1250	-.0005	1.000	1.010	5/64	.025	.3755	-.0005	.3747	-.0005	1.1247	-.0007	1.1257	-.0007	6400	3400
GR-12-SS	MI-8	.5000		1.2500		1.000	1.010	5/64	.040	.5005		.4997		1.2497		1.2497		7200	3700
GR-14-SS	MI-10	.6250		1.3750		1.000	1.010	5/64	.040	.6255		.6247		1.3747		1.3757		8400	4150
GR-16-SS	MI-12	.7500	-.0005	1.5000	-.0005	1.000	1.010	5/64	.040	.7505	-.0005	.7497	-.0005	1.4997	-.0007	1.5007	-.0007	9600	4350
	MI-13	.8125		1.5000		1.000	1.010	5/64	.040	.8129		.8121		1.4997		1.5007		9600	4350
GR-18-SS	MI-14	.8750	-.0005	1.6250	-.0005	1.250	1.260	3/32	.040	.8754	-.0005	.8746	-.0005	1.6247	-.0007	1.6257	-.0007	15200	6250
	MI-15	.9375		1.6250		1.250	1.260	3/32	.040	.9379		1.6247		1.6257		15200		6250	
GR-20-SS	MI-16	1.0000	-.0005	1.7500	-.0005	1.250	1.260	3/32	.040	1.0004	-.0005	.9996	-.0005	1.7497	-.0007	1.7507	-.0007	17000	6500
GR-22-SS	MI-17	1.0625		1.8750		1.250	1.260	3/32	.040	1.0630		1.0621		1.8747		1.8757		18600	7100
	MI-18	1.1250	1.8750	1.250	1.260	3/32	.040	1.1255	1.1246	1.8747	1.8757	18600	7100						
GR-24-SS	MI-19	1.1875	-.0005	2.0625	-.0005	1.250	1.260	3/32	.060	1.1880	-.0005	1.1871	-.0005	2.0621	-.0007	2.0632	-.0007	20200	7150
	MI-20	1.2500		2.0625		1.250	1.260	3/32	.060	1.2505		1.2496		2.0621		2.0632		20200	7150
GR-26-SS	MI-21	1.3125	-.0005	2.1875	-.0005	1.250	1.260	3/32	.060	1.3130	-.0005	1.3121	-.0005	2.1882	-.0007	2.1892	-.0007	21700	7500
	MI-22-4S	1.3750		2.1875		1.250	1.260	3/32	.060	1.3755		1.3746		2.1871		2.1882		21700	7500
GR-28-SS	MI-22	1.3750	-.0005	2.3125	-.0005	1.250	1.260	3/32	.060	1.3755	-.0005	1.3746	-.0005	2.3121	-.0007	2.3132	-.0007	23300	7750
	MI-23	1.4375		2.3125		1.250	1.260	3/32	.060	1.4380		1.4371		2.3121		2.3132		23300	7750
	MI-24	1.5000		2.3125		1.250	1.260	3/32	.060	1.5005		1.4996		2.3121		2.3132		23300	7750
GR-30-SS	MI-25-4S	1.5625	-.0006	2.4375	-.0006	1.250	1.260	3/32	.060	1.5630	-.0006	1.5621	-.0006	2.4371	-.0010	2.4382	-.0010	25200	8150
GR-32-SS	MI-25	1.5625		2.5625		1.250	1.260	3/32	.060	1.5630		1.5621		2.5621		2.5632		26700	8000
	MI-26	1.6250		2.5625		1.250	1.260	3/32	.060	1.6255		1.6246		2.5621		2.5632		26700	8000
	MI-27	1.6875	2.5625	1.250	1.260	3/32	.060	1.6880	1.6871	2.5621	2.5632	26700	8000						
GR-36-SS	MI-28	1.7500	-.0006	3.0000	-.0006	1.750	1.760	1/8	.060	1.7505	-.0006	1.7496	-.0006	2.9996	-.0010	3.0007	-.0010	49100	15250
	MI-30	1.8750		3.0000		1.750	1.760	1/8	.060	1.8755		1.8746		2.9996		3.0007		49100	15250
GR-40-SS	MI-31	1.9375	-.0006	3.2500	-.0006	1.750	1.760	1/8	.080	1.9380	-.0006	1.9371	-.0006	3.2496	-.0010	3.2507	-.0010	54500	16200
	MI-32	2.0000		3.2500		1.750	1.760	1/8	.080	2.0005		1.9996		3.2496		3.2507		54500	16200
	MI-34	2.1250		3.2500		1.750	1.760	1/8	.080	2.1258		2.1247		3.2496		3.2507		54500	16200
GR-44-SS	MI-35	2.1875	-.0006	3.5000	-.0006	1.750	1.760	1/8	.080	2.1883	-.0006	1.1872	-.0006	3.4995	-.0010	3.5008	-.0010	59900	16800
	MI-36	2.2500		3.5000		1.750	1.760	1/8	.080	2.2508		2.2497		3.4995		3.5008		59900	16800
GR-48-SS	MI-38	2.3750	-.0006	3.7500	-.0006	1.750	1.760	1/8	.080	2.3758	-.0006	2.3747	-.0006	3.7495	-.0010	3.7508	-.0010	65400	17350
	MI-39	2.4375		3.7500		1.750	1.760	1/8	.080	2.4383		2.4372		3.7495		3.7508		65400	17350
	MI-40	2.5000		3.7500		1.750	1.760	1/8	.080	2.5008		2.4997		3.7495		3.7508		65400	17350
GR-52-SS	MI-42	2.6250	-.0006	4.2500	-.0008	1.750	1.760	3/16	.080	2.6258	-.0008	2.6247	-.0008	4.2495	-.0010	4.2508	-.0010	63800	20050
	MI-44	2.7500		4.2500		1.750	1.760	3/16	.080	2.7508		2.7497		4.2495		4.2508		63800	20050
GR-56-SS	MI-46	2.8750	-.0006	4.5000	-.0008	2.000	2.010	3/16	.080	2.8758	-.0008	2.8747	-.0008	4.4995	-.0010	4.5008	-.0010	86500	25100
	MI-47	2.9375		4.5000		2.000	2.010	3/16	.080	2.9383		2.9372		4.4995		4.5008		86500	25100
	MI-48	3.0000		4.5000		2.000	2.010	3/16	.080	3.0008		2.9997		4.4995		4.5008		86500	25100
GR-60-SS	MI-50	3.1250	-.0006	4.7500	-.0008	2.000	2.010	3/16	.100	3.1260	-.0010	3.1246	-.0010	4.7495	-.0015	4.7508	-.0015	92300	25450
	MI-52	3.2500		4.7500		2.000	2.010	3/16	.100	3.2510		3.2496		4.7495		4.7508		92300	25450
GR-64-SS	MI-54	3.3750	-.0008	5.0000	-.0010	2.000	2.010	3/16	.100	3.3758	-.0010	3.3746	-.0010	4.9999	-.0015	5.0011	-.0015	98800	26750
	MI-56	3.5000		5.0000		2.000	2.010	3/16	.100	3.5008		3.4996		4.9999		5.0011		98800	26750
GR-68-SS	MI-58	3.6250	-.0008	5.2500	-.0010	2.000	2.010	3/16	.100	3.6258	-.0010	3.6246	-.0010	5.2499	-.0015	5.2511	-.0015	104000	27400
	MI-60	3.7500		5.2500		2.000	2.010	3/16	.100	3.7508		3.7496		5.2499		5.2511		104000	27400

* This dimension may be slightly oversize due to seal press fit.

Outer ring and roller assembly without separable inner ring

Available in 5 seal combinations (see page 75 also)

The outer ring and roller assemblies are for use without inner rings on a ground shaft for which a minimum hardness of 58 Rockwell "C" scale is recommended. The suffix "SS" indicates double seals with lips turned in (illustrated at right). This construction is most common and is intended primarily for lubrication retention. For other seal combinations, see page 75.



McGILL NUMBER outer ring & roller assy.	S SHAFT DIA.		D*		W	H	R	HSG. BORE DIA.			STATIC LOAD RATING (LBS.)	BASIC DYNAMIC RATING (LBS.)	
	+ .0000	TOL.	+ .0000	TOL.	+ .000 - .005	HOLE DIA.	MAX. FILLET FOR HOUSING	ROTATING HOUSING	TOL. + .0000	STATIONARY HOUSING			TOL. + .0000
GR-10-SS	.6250		1.1250		1.000	5/64	.025	1.1247		1.1257		6400	3400
GR-12-SS	.7500		1.2500		1.000	5/64	.040	1.2497		1.2507		7200	3700
GR-14-SS	.8750		1.3750		1.000	5/64	.040	1.3747		1.3757		8400	4150
GR-16-SS	1.0000		1.5000	-.0005	1.000	5/64	.040	1.4997		1.5007		9600	4350
GR-18-SS	1.1250		1.6250		1.250	3/32	.040	1.6247		1.6257		15200	6250
GR-20-SS	1.2500		1.7500		1.250	3/32	.040	1.7497		1.7507		17000	6500
GR-22-SS	1.3750		1.8750		1.250	3/32	.040	1.8747		1.8757		18600	7100
GR-24-SS	1.5000		2.0625		1.250	3/32	.060	2.0621		2.0632		20200	7150
GR-26-SS	1.6250		2.1875		1.250	3/32	.060	2.1871		2.1882		21700	7500
GR-28-SS	1.7500	-.0005	2.3125		1.250	3/32	.060	2.3121		2.3132		23300	7750
GR-30-SS	1.8750		2.4375	-.0006	1.250	3/32	.060	2.4371		2.4382		25200	8150
GR-32-SS	2.0000		2.5625		1.250	3/32	.060	2.5621		2.5632		26700	8000
GR-36-SS	2.2500		3.0000		1.750	1/8	.060	2.9996		3.0007		49100	15250
GR-40-SS	2.5000		3.2500		1.750	1/8	.080	3.2496		3.2507		54500	16200
GR-44-SS	2.7500		3.5000		1.750	1/8	.080	3.4995		3.5008		59900	16800
GR-48-SS	3.0000		3.7500		1.750	1/8	.080	3.7495		3.7508		65400	17350
GR-52-SS	3.2500		4.2500	-.0008	1.750	3/16	.080	4.2495		4.2508	-.0010	63800	20050
GR-56-SS	3.5000		4.5000		2.000	3/16	.080	4.4995		4.5008		86500	25100
GR-60-SS	3.7500		4.7500		2.000	3/16	.100	4.7495		4.7508		92300	25450
GR-64-SS	4.0000		5.0000	-.0010	2.000	3/16	.100	4.9999		5.0011	-.0015	98800	26750
GR-68-SS	4.2500	-.0007	5.2500		2.000	3/16	.100	5.2499	-.0015	5.2511		104000	27400

* This dimension may be slightly oversized due to seal press fit.