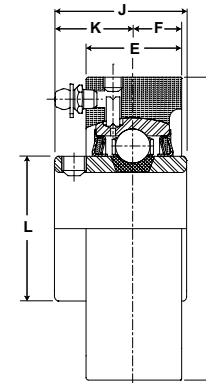




- Duty:** Medium
- Rolling Elements:** Ball
- Housing:** Cast Iron Cylindrical Cartridge
- Self Alignment:** +/- 2 Degrees
- Lock:** Setscrew
- Seal:** Felt
- Optional Seal:** Contact
- Temperature:** -20° to 220° F



## MSC Series Medium Duty Cartridge Units - Setscrew Locking

BORE DIAMETER		PART No.	BEARING INSERT No.	BASIC DYNAMIC RATING lb/N	DIMENSIONS inch / mm						UNIT Wt. lb/kg
inch	mm				A	E	F	J	K	L	
				±.001"							
15/16		MSC-15	3-015	4381 19487	3.500 88.90	1 3/32 27.8	9/16 14.3	1 1/2 38.1	7/8 22.2	1 19/32 40.5	2.5 1.13
1	25	MSC-16	3-1								
		MSC-305	5305								
1 3/16		MSC-19	3-13	5782 25718	3.875 98.43	1 7/32 31.0	5/8 15.9	1 11/16 42.9	1 25.4	1 55/64 47.2	3.2 1.45
1 1/4	30	MSC-20	2-14								
		MSC-306	5306								
1 3/8		MSC-22	3-16	7340 32648	4.188 106.36	1 15/32 37.3	3/4 19.1	1 15/16 49.2	1 3/16 30.2	2 1/16 52.4	4.1 1.86
1 7/16	35	MSC-23	3-17								
		MSC-307	5307								
1 1/2		MSC-24	3-18	7901 35144	4.375 111.13	1 7/16 36.5	23/32 18.3	1 15/16 49.2	1 3/16 30.2	2 19/64 58.3	4.5 2.04
	40	MSC-308	5308								
1 11/16		MSC-27	3-111	7889 35090	4.563 115.89	1 15/32 37.3	3/4 19.1	2 1/32 51.6	1 9/32 32.5	2 15/32 62.7	4.9 2.22
1 3/4	45	MSC-28	3-112								
		MSC-309	5309								
1 15/16		MSC-31	3-115	9752 43377	4.938 125.41	1 19/32 40.5	51/64 20.2	2 3/16 55.6	1 5/16 33.3	2 23/32 69.1	5.8 2.63
2	50	MSC-32	2-2								
		MSC-310	5310								
2 3/16		MSC-35	3-23	11789 52437	5.875 149.23	1 5/8 41.3	13/16 20.6	2 9/16 65.1	1 9/16 39.7	2 63/64 75.8	9.5 4.31
2 1/4	55	MSC-36	2-24								
		MSC-311	5311								
2 7/16		MSC-39	3-27	13971 62143	6.250 158.75	2 50.8	1 25.4	2 3/4 69.9	1 11/16 42.9	3 7/16 87.3	12.6 5.72
2 1/2	65	MSC-40	3-28								
		MSC-313	5313								
2 11/16		MSC-43	3-211	14839 66004	6.625 168.28	2 50.8	1 25.4	3 1/16 77.8	1 3/4 44.5	3 21/32 92.9	14.1 6.40
2 3/4	70	MSC-44	3-212								
		MSC-314	5314								
2 15/16		MSC-47	3-215	17412 77449	7.000 177.80	2 3/16 55.6	1 3/32 27.8	3 1/4 82.6	1 15/16 49.2	3 59/64 99.6	16.6 7.53
3	75	MSC-48	3-3								
		MSC-315	5315								
3 3/16		MSC-51	3-33	18681 83093	7.438 188.91	2 1/2 63.5	1 1/4 31.8	3 3/8 85.7	2 1/32 51.6	4 5/32 105.6	20.2 9.16
3 1/4		MSC-52	2-34								
3 3/8		MSC-54	2-36								
	80	MSC-316	5316								
3 7/16		MSC-55	3-37	21566 95926	8.188 207.96	2 1/2 63.5	1 1/4 31.8	3 25/32 96.0	2 7/32 56.4	4 25/64 111.5	25.8 11.70
3 1/2		MSC-56	2-38								
3 15/16		MSC-63	3-315	29905 133017	9.500 241.30	3 76.2	1 1/2 38.1	4 5/8 117.5	2 11/16 68.3	5 11/64 131.4	42 19.05
4	100	MSC-64	3-4								
		MSC-320	5320								

For Medium Duty Bearing Inserts-Single Lock see [page G-95](#).  
 For Housing fit guidelines see [page G-261](#).  
 Sizes 2 7/16 and above come standard with Time Saving™ Axial Groove. See [page G-22](#) for more information.