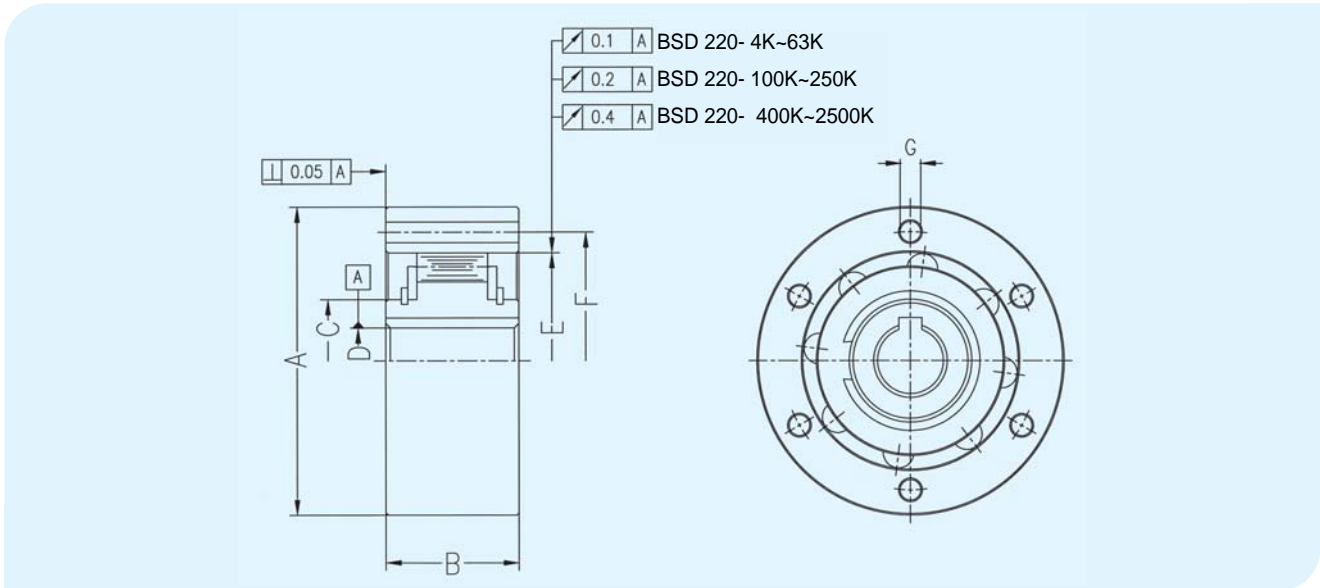


# BSD 220-K Series



## Specification

Dimensions-mm

Model	Max. Torque (kgf-m)	Max. Overrunning (rpm)		Stock Bore Size		A	C	E	F	B	No. of Holes (N-G)	Weight (kgf)
		Inner Race	Outer Race	Standard Bore	Max. Bore							
-4K	26	3,800	7,000	16	16	67	25	47	56	34	4- $\phi$ 5.5	0.8
-6.3K	54	2,400	4,800	20	20	80	30	55	68	38	4- $\phi$ 5.5	1.1
-10K	90	1,700	3,500	25	25	95	40	68	82	42	6- $\phi$ 5.5	1.6
-16K	100	1,400	3,000	28	30	105	45	75	90	42	6- $\phi$ 6.6	2.6
-25K	220	1,250	2,500	35	40	125	55	90	107	52	6- $\phi$ 6.6	3.4
-40K	240	1,100	2,000	40	45	135	60	95	115	52	6- $\phi$ 9	4
-63K	340	960	1,700	45	50	150	70	110	130	60	6- $\phi$ 11	5.6
-100K	640	840	1,500	55	60	180	85	130	155	74	6- $\phi$ 11	11
-160K	880	745	1,300	70	75	210	100	150	180	76	6- $\phi$ 14	14
-250K	1,520	635	1,150	80	90	245	120	180	214	85	8- $\phi$ 14	25
-400K	2,160	550	1,000	95	100	280	140	210	245	100	8- $\phi$ 18	35
-630K	3,720	480	900	110	130	320	160	240	280	115	8- $\phi$ 22	55
-1000K	6,400	420	800	130	140	370	180	280	325	140	8- $\phi$ 22	83
-1600K	9,200	360	700	140	150	410	200	310	360	160	8- $\phi$ 26	121
-2500K	13,000	320	650	160	160	460	220	340	400	180	8- $\phi$ 33	180
-4000K	22,200	150	200	210	210	560	300	440	500	180	12- $\phi$ 33	265
-6300K	37,000	100	150	230	230	680	330	520	605	230	16- $\phi$ 33	395

## Character

1. Oil lubrication
2. BSD 220-K Series can be used for backstopping in a gear reducer.
3. Please use standard bore if possible.
4. The key way is in accordance with DIN 6885 Sheet 1.  
(Refer to page 39)