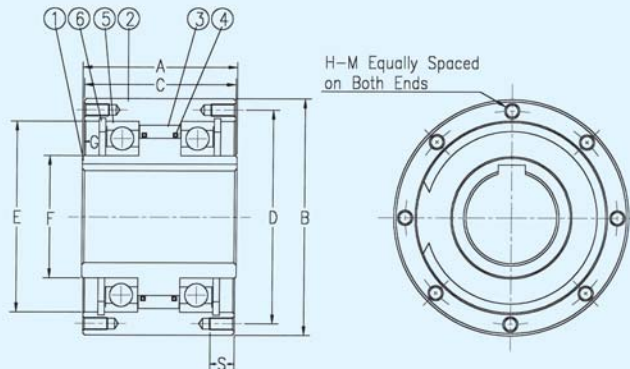
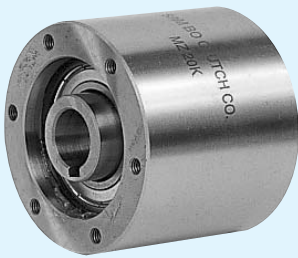




BACKSTOPPING / OVERRUNNING / INDEXING (FOR HEAVY LOAD)

MZ-K Series

FOR GENERAL PURPOSES



1. Inner Race
2. Outer Race
3. Cam
4. Spring
5. Shield Bearing
6. Snap Ring

Specification

Dimensions-mm

Model	Max. Torque (kgf-m)	Nominal Overrunning Drag (kgf-m)	Max. Overrunning (rpm)		Max. Indexing (cycle /min)	Stock Bore Size		A	B (h6)	C	D	E (M6)	F	G	H-M No. of Tapped Holes x Dia x Pitch	S	Weight (kgf)
			Inner Race	Outer Race		Dia (H7)	Key Way										
MZ 20K	33	0.03	1,600	700	150	20	6 x 2.8	67	80	65	68	55	30	7.6	6 x M6 x 1.0	13	2.0
MZ 30K	75	0.04	1,500	500	150	30	10 x 3.3	82	100	80	88	75	45	8.9	6 x M8 x 1.25	16	3.6
MZ 45K	165	0.07	1,400	300	150	45	14 x 3.8	92	125	90	110	95	60	8.4	8 x M8 x 1.25	16	6.0
MZ 60K	215	0.10	1,200	250	150	60	18 x 4.4	102	155	100	140	125	80	9.1	8 x M8 x 1.25	16	9.9
MZ 70K	310	0.13	1,100	250	150	70	20 x 4.9	105	175	103	162	145	95	8.6	8 x M8 x 1.25	20	12.9

Character

1. MZ-K Series are shielded by bearings on both ends, packed with a grease.
2. High tension bolts are recommended for pulleys, gears or sprockets fixing to the outer race of cam clutch. (refer the drawing)
3. Fix Clutch by an end plate to shaft end. (refer the side drawing)
4. Ambient temperature range is -5°C to +40°C

Shaft Tolerance

Model	Shaft Tolerance
MZ 20K	0 to -0.021
MZ 30K	0 to -0.021
MZ 45K	0 to -0.025
MZ 60K	0 to -0.030
MZ 70K	0 to -0.030

Application

