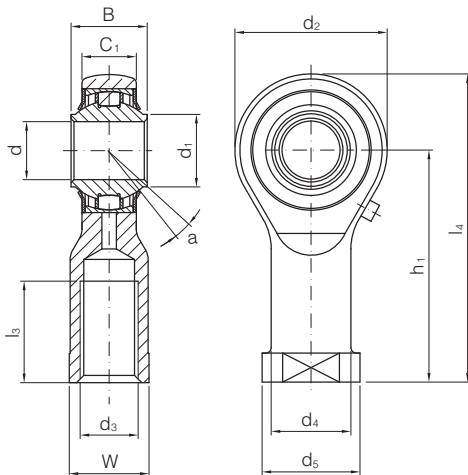


## Roller bearing

Mounting sizes acc. to DIN ISO 12240-4 dimension series K

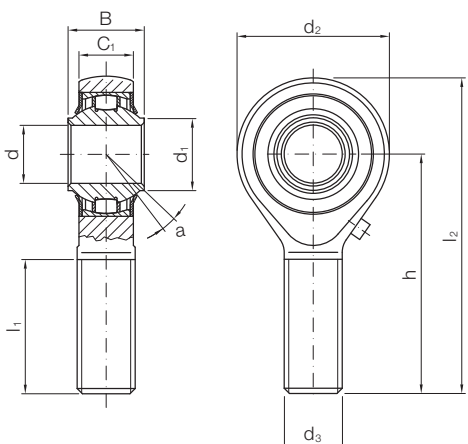
- Inner ring:** Antifriction bearing steel, hardened, high precision machined.
- Housing:** Steel with bearing outer ring pressed into housing, raceway precision ground.
- Rolling element:** Barrel roller bearings made from through-hardened, antifriction bearing steel.
- Retainer:** Synthetic material.
- Covering disc:** Stainless steel plate caulked into housing.
- Lubrication:** The rod ends are given initial lubrication.

## Female thread

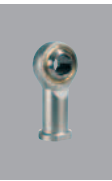


Designation		d	d <sub>3</sub>	B	C <sub>1</sub>	d <sub>1</sub> ≈	d <sub>2</sub> max.	d <sub>4</sub>
Righthand thread	Lefthand thread	mm	mm	mm	mm	mm	mm	mm
KI 20202-ZZ	KIL 20202-ZZ	12	M12	16	12	14.6	33	17.5
KI 20203-ZZ	KIL 20203-ZZ	16	M16	21	15	18.7	43	22.0
KI 20204-ZZ	KIL 20204-ZZ	20	M20x1.5	25	18	24.15	51	27.5
KI 20205-ZZ	KIL 20205-ZZ	25	M24x2	31	22	29.8	61	33.5
KI 20206-ZZ	KIL 20206-ZZ	30	M30x2	37	25	35.6	71	40.0

## Male thread



Designation		d	d <sub>3</sub>	B	C <sub>1</sub>	d <sub>1</sub> ≈	d <sub>2</sub> max.	h
Righthand thread	Lefthand thread	mm	mm	mm	mm	mm	mm	mm
KA 20202-ZZ	KAL 20202-ZZ	12	M12	16	12	14.6	33	54
KA 20203-ZZ	KAL 20203-ZZ	16	M16	21	15	18.7	43	66
KA 20204-ZZ	KAL 20204-ZZ	20	M20x1.5	25	18	24.15	51	78
KA 20205-ZZ	KAL 20205-ZZ	25	M24x2	31	22	29.8	61	94
KA 20206-ZZ	KAL 20206-ZZ	30	M30x2	37	25	35.6	71	110



**Note:** With these rod ends, it is important to ensure that the tilt angle specified in the table is not exceeded, either while mounting or during operation, otherwise the sealing washers may be damaged.

**Max. permissible speed:** This is affected by the bearing load, the bearing clearance, the lubricant and heat output and input. The maximum permissible speed given in the tables applies for a purely radial load, normal bearing clearance tolerance, no external heat, an operating temperature which is not above the limit, and a low and absolutely shock-free load.

**Cabrivating nipple:** DIN 71412

**Load ratings:** calculated acc. to DIN ISO 76 and 281

**Special versions:** full complement (without retainer) available on request

d <sub>5</sub>	h <sub>1</sub>	l <sub>3</sub> min.	l <sub>4</sub> ≈	W	Limiting speed	Load ratings		Tilt angle
						bearing dynamic C	bearing static C <sub>0</sub>	
mm	mm	mm	mm	mm	min <sup>-1</sup>	kN	kN	α°
22	50	18	66.5	19	950	9.55	7.70	7
27	64	24	85.5	22	650	9.55	8.10	7
34	77	30	103.5	30	550	14.99	13.40	7
42	94	36	124.5	36	400	23.12	21.85	5
50	110	45	145.5	41	300	28.82	26.20	7

l <sub>1</sub> min.	l <sub>2</sub> ≈	Limiting speed	Load ratings		Tilt angle
			bearing dynamic C	bearing static C <sub>0</sub>	
mm	mm	min <sup>-1</sup>	kN	kN	α°
32	70.5	950	9.55	7.70	7
37	87.5	650	9.55	8.10	7
45	104.5	550	14.90	13.40	7
55	124.5	400	23.12	21.85	5
66	145.5	300	28.82	26.20	7