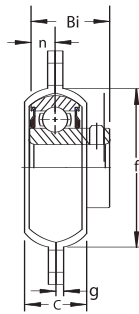


# Flange Units – Pressed Steel 3 Bolt Triangle

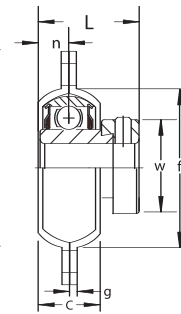
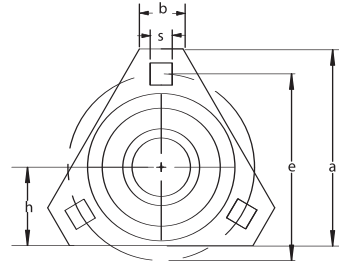
## FHSPFTZ200 / FHPFTZ200 Series



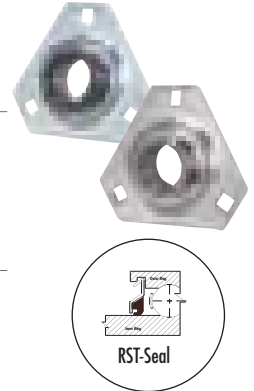
- Two light duty, self-aligning pressed steel housings
- Narrow inner ring bearing
- Zinc plated stamped steel (shown)
- Non-plated, raw stamped steel available (FHSPFTR/FHPFTR Series)
- Non-relubricatable unit (shown)
- Standard Seal: RST tight riding, full cover, metal shroud seals



FHSPFTZ200



FHPFTZ200



Optional seals: See page 85

### FHSPFTZ200 Set Screw Locking

Dimensions <sup>in</sup> / <sub>mm</sub>														
Unit No.	Shaft Diam.	a	e	h	s	c	g	b	f	Bi	n	Bolt Size In.	Bearing No.	Housing No.
FHSPFTZ201 -8 FHSPFTZ201 -12mm FHSPFTZ202 -9 FHSPFTZ202 -10 FHSPFTZ202 -15mm FHSPFTZ203 -11 FHSPFTZ203 -17mm	1/2 12mm 9/16 5/8 15mm 11/16 17mm	2 23/32 69	2 1/2 64	1 1/8 29	9/32 7	9/16 14	.074 1.9	13/16 21	1 15/16 49	0.8858 22.500	0.256 6.50	1/4	FHS201 -8 FHS201 -12mm FHS202 -9 FHS202 -10 FHS202 -15mm FHS203 -11 FHS203 -17mm	PFT-3Z
FHSPFTZ204 -12 FHSPFTZ204 -13 FHSPFTZ204 -20mm	3/4 13/16 20mm	3 76	2 13/16 71	1 5/16 33	11/32 9	5/8 16	.083 2.1	1 1/16 27	2 3/16 56	0.9843 25.000	0.295 7.50	5/16	FHS204 -12 FHS204 -13 FHS204 -20mm	PFT-4Z
FHSPFTZ205 -12 FHSPFTZ205 -13 FHSPFTZ205 -14 FHSPFTZ205 -15 FHSPFTZ205 -16 FHSPFTZ205 -25mm	3/4 13/16 7/8 15/16 1 25mm	3 1/8 79	3 76	1 3/8 35	11/32 9	11/16 17	.083 2.1	1 3/32 28	2 3/8 66	1.0630 27.000	0.295 7.50	5/16	FHS205 -12 FHS205 -13 FHS205 -14 FHS205 -15 FHS205 -16 FHS205 -25mm	PFT-5Z
FHSPFTZ206 -17 FHSPFTZ206 -18 FHSPFTZ206 -19 FHSPFTZ206 -20 FHSPFTZ206 -30mm	1 1/16 1 1/8 1 3/8 1 1/4(s) 30mm	3 11/16 94	3 9/16 90	1 1/2 38	13/32 10	11/16 17	.104 2.6	1 25	2 13/16 71	1.1811 30.000	0.354 9.00	3/8	FHS206 -17 FHS206 -18 FHS206 -19 FHS206 -20 FHS206 -30mm	PFT-6Z
FHSPFTZ207 -20 FHSPFTZ207 -21 FHSPFTZ207 -22 FHSPFTZ207 -23 FHSPFTZ207 -35mm	1 1/4 1 5/16 1 3/8 1 7/16 35mm	4 5/32 106	3 15/16 100	1 3/4 44	13/32 10	3/4 19	.104 2.6	1 17/64 32	3 3/16 81	1.2598 32.000	0.374 9.50	3/8	FHS207 -20 FHS207 -21 FHS207 -22 FHS207 -23 FHS207 -35mm	PFT-7Z

Standard Mounted Units

### FHPFTZ200 Eccentric Locking Collar

Dimensions <sup>in</sup> / <sub>mm</sub>															
Unit No.	Shaft Diam.	a	e	h	s	c	g	b	f	L	n	W	Bolt Size In.	Bearing No.	Housing No.
FHPFTZ201 -8 FHPFTZ201 -12mm FHPFTZ202 -9 FHPFTZ202 -10 FHPFTZ202 -15mm FHPFTZ203 -11 FHPFTZ203 -17mm	1/2 12mm 9/16 5/8 15mm 11/16 17mm	2 23/32 69	2 1/2 64	1 1/8 29	9/32 7	9/16 14	.074 1.9	13/16 21	1 15/16 49	1.1260 28.600	0.256 6.50	1.13 28.60	1/4	FH201 -8 FH201 -12mm FH202 -9 FH202 -10 FH202 -15mm FH203 -11 FH203 -17mm	PFT-3Z
FHPFTZ204 -12 FHPFTZ204 -20mm	3/4 20mm	3 76	2 13/16 71	1 5/16 33	11/32 9	5/8 16	.083 2.1	1 1/16 27	2 3/16 56	1.2205 31.000	0.295 7.50	1.26 32.00	5/16	FH204 -12 FH204 -20mm	PFT-4Z
FHPFTZ205 -13 FHPFTZ205 -14 FHPFTZ205 -15 FHPFTZ205 -16 FHPFTZ205 -25mm	13/16 7/8 15/16 1 25mm	3 1/8 79	3 76	1 3/8 35	11/32 9	11/16 17	.083 2.1	1 3/32 28	2 3/8 66	1.2205 31.000	0.295 7.50	1.50 38.10	5/16	FH205 -13 FH205 -14 FH205 -15 FH205 -16 FH205 -25mm	PFT-5Z
FHPFTZ206 -17 FHPFTZ206 -18 FHPFTZ206 -19 FHPFTZ206 -20 FHPFTZ206 -30mm	1 1/16 1 1/8 1 3/16 1 1/4(s) 30mm	3 11/16 94	3 9/16 90	1 1/2 38	13/32 10	11/16 17	.104 2.6	1 25	2 13/16 71	1.4055 35.700	0.354 9.00	1.75 44.50	3/8	FH206 -17 FH206 -18 FH206 -19 FH206 -20 FH206 -30mm	PFT-6Z
FHPFTZ207 -20 FHPFTZ207 -21 FHPFTZ207 -22 FHPFTZ207 -23 FHPFTZ207 -35mm	1 1/4 1 5/16 1 3/8 1 7/16 35mm	4 5/32 106	3 15/16 100	1 3/4 44	13/32 10	3/4 19	.104 2.6	1 17/64 32	3 3/16 81	1.5315 38.900	0.374 9.50	2.19 55.60	3/8	FH207 -20 FH207 -21 FH207 -22 FH207 -23 FH207 -35mm	PFT-7Z

Stamped housings can be made in AISI 304 stainless steel. Combine with stainless steel bearing for maximum corrosion resistance:  
Example: SSFHSPFT205-16