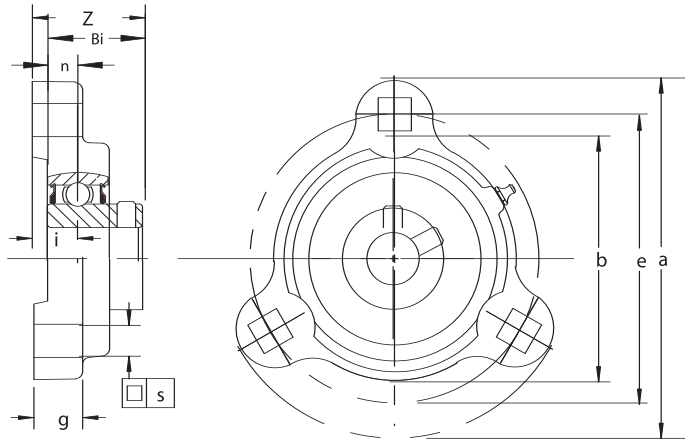
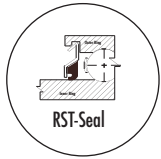




Flange Units – Ductile 3 Bolt

FHSF3X200-G Series Set Screw Locking



- Standard duty, high strength ductile iron
- Solid foot housing design
- Narrow inner ring bearing
- Relubricatable unit (Shown)
- Non-relubricatable unit available (omit "G" from unit part number)
- Standard seal: RST tight riding, full cover, metal shroud seals

Optional seals: See page 85

Dimensions ⁱⁿ / _{mm}														
Unit No.	Shaft Diam.	a	e	i	b	d	g	s	Z	Bi	n	Bolt Size In.	Bearing No.	Housing No.
FHSF3X201 -8G	1/2												FHS201 -8G	
FHSF3X201 -12mmG	12mm												FHS201 -12mmG	
FHSF3X202 -9G	9/16												FHS202 -9G	
FHSF3X202 -10G	5/8	3 3/16	2 1/2	.318	2 3/32	1 19/32	13/32	9/32	0.99	0.8858	0.256	1/4	FHS202 -10G	F3X-203-H
FHSF3X202 -15mmG	15mm	80.9	63.5	9.10	53.2	40.5	10.3	7.1	25.1	22.500	6.50		FHS202 -15mmG	
FHSF3X203 -11G	11/16												FHS203 -11G	
FHSF3X203 -17mmG	17mm												FHS203 -17mmG	
FHSF3X204 -12G	3/4												FHS204 -12G	
FHSF3X204 -13G	13/16	3 9/16	2 13/16	.437	2 13/64	1 25/32	7/16	11/32	1.13	0.9843	0.295	5/16	FHS204 -13G	F3X-204-H
FHSF3X204 -20mmG	20mm	90.5	71.4	11.10	55.9	45.2	11.1	8.7	28.6	25.000	7.50		FHS204 -20mmG	
FHSF3X205 -12G	3/4												FHS205 -12G	
FHSF3X205 -13G	13/16												FHS205 -13G	
FHSF3X205 -14G	7/8	3 3/4	3	.437	2 13/16	1 7/8	1/2	11/32	1.20	1.0630	0.295	5/16	FHS205 -14G	F3X-205-H
FHSF3X205 -15G	15/16	95.3	76.2	11.10	71.4	47.6	12.7	8.7	30.6	27.000	7.50		FHS205 -15G	
FHSF3X205 -16G	1												FHS205 -16G	
FHSF3X205 -25mmG	25mm												FHS205 -25mmG	
FHSF3X206 -17G	1 1/16												FHS206 -17G	
FHSF3X206 -18G	1 1/8												FHS206 -18G	
FHSF3X206 -19G	1 3/16	4 9/16	3 9/16	.437	3	2 9/32	19/32	13/32	1.26	1.1811	0.354	3/8	FHS206 -19G	F3X-206-H
FHSF3X206 -20G	1 1/4(s)	115.9	90.5	11.10	76.2	57.9	15.1	10.3	32.1	30.000	9.00		FHS206 -20G	
FHSF3X206 -30mmG	30mm												FHS206 -30mmG	
FHSF3X207 -20G	1 1/4												FHS207 -20G	
FHSF3X207 -21G	1 5/16												FHS207 -21G	
FHSF3X207 -22G	1 3/8	4 13/16	3 15/16	.500	3 15/32	2 13/32	19/32	13/32	1.39	1.2598	0.374	3/8	FHS207 -22G	F3X-207-H
FHSF3X207 -23G	1 7/16	122.2	100.0	12.70	88.1	61.1	15.1	10.3	35.2	32.000	9.50		FHS207 -23G	
FHSF3X207 -35mmG	35mm												FHS207 -35mmG	

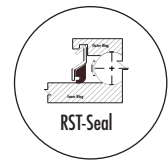
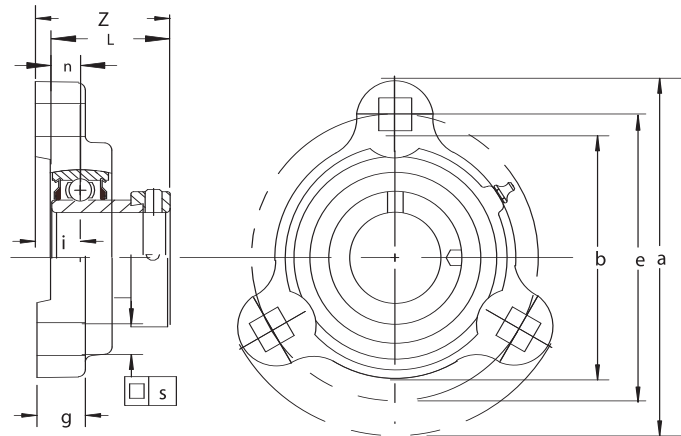
For reverse mounting, add suffix "REV" after unit number:
 Example: FHSF3X205-16G-REV

Flange Units – Ductile 3 Bolt FHF3X200-G Series Eccentric Locking Collar



- Standard duty, high strength ductile iron
- Solid foot housing design
- Narrow inner ring bearing
- Relubricatable unit (shown)
- Non-relubricatable unit available (omit "G" from unit part number)
- Standard seal: RST tight riding, full cover, metal shroud seals

Optional seals: See page 85



Dimensions ⁱⁿ / _{mm}														
Unit No.	Shaft Diam.	a	e	i	b	d	g	s	Z	L	n	Bolt Size In.	Bearing No.	Housing No.
FHF3X201 -8G	1/2												FH201 -8G	F3X-203-H
FHF3X201 -12mmG	12mm												FH201 -12mmG	
FHF3X202 -9G	9/16	3 3/16	2 1/2	.318	2 3/32	1 19/32	13/32	9/32	1.23	1.1260	0.256	1/4	FH202 -9G	
FHF3X202 -10G	5/8	80.9	63.5	9.10	53.2	40.5	10.3	7.1	31.2	28.600	6.50		FH202 -10G	
FHF3X202 -15mmG	15mm												FH202 -15mmG	
FHF3X203 -11G	11/16												FH203 -11G	F3X-204-H
FHF3X203 -17mmG	17mm												FH203 -17mmG	
FHF3X204 -12G	3/4	3 9/16	2 13/16	.437	2 13/64	1 25/32	7/16	11/32	1.36	1.2205	0.295	5/16	FH204 -12G	F3X-205-H
FHF3X204 -20mmG	20mm	90.5	71.4	11.10	55.9	45.2	11.1	8.7	34.6	31.000	7.50		FH204 -20mmG	
FHF3X205 -13G	13/16												FH205 -13G	F3X-206-H
FHF3X205 -14G	7/8												FH205 -14G	
FHF3X205 -15G	15/16	3 3/4	3	.437	2 13/16	1 7/8	1/2	11/32	1.36	1.2205	0.295	5/16	FH205 -15G	
FHF3X205 -16G	1	95.3	76.2	11.10	71.4	47.6	12.7	8.7	34.6	31.000	7.50		FH205 -16G	
FHF3X205 -25mmG	25mm												FH205 -25mmG	
FHF3X206 -17G	1 1/16												FH206 -17G	F3X-207-H
FHF3X206 -18G	1 1/8												FH206 -18G	
FHF3X206 -19G	1 3/16	4 9/16	3 9/16	.437	3	2 9/32	19/32	13/32	1.49	1.4055	0.354	3/8	FH206 -19G	
FHF3X206 -20G	1 1/4(s)	115.9	90.5	11.10	76.2	57.9	15.1	10.3	37.8	35.700	9.00		FH206 -20G	
FHF3X206 -30mmG	30mm												FH206 -30mmG	
FHF3X207 -20G	1 1/4												FH207 -20G	F3X-207-H
FHF3X207 -21G	1 5/16												FH207 -21G	
FHF3X207 -22G	1 3/8	4 13/16	3 15/16	.500	3 15/32	2 13/32	19/32	13/32	1.66	1.5315	0.374	3/8	FH207 -22G	
FHF3X207 -23G	1 7/16	122.2	100.0	12.70	88.1	61.1	15.1	10.3	42.1	38.900	9.50		FH207 -23G	
FHF3X207 -35mmG	35mm												FH207 -35mmG	

For reverse mounting, add suffix "REV" after unit number:

Example: FHF3X205-16G-REV

Standard Mounted Units