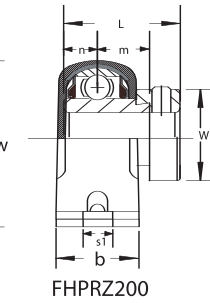
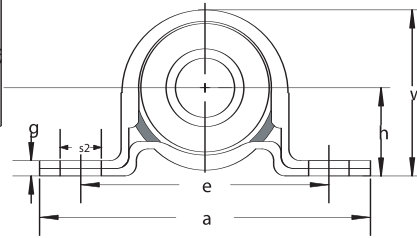
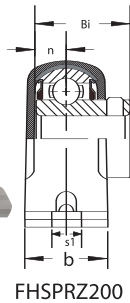




Pillow Blocks – Rubber Cushioned Pressed Steel

FHSPRZ200 / FHPRZ200 Series



- Light duty, self-aligning pressed steel housings
- Conductive rubber bearing liner reduces noise/vibration and static electricity
- Two piece housing units are available with inter-locking feature (IL suffix shown) or non-locking (NL suffix)
- Narrow inner ring bearing
- Standard seal: RST tight riding, full cover, metal shroud seals



Optional seals: See page 85

FHSPRZ200 Set Screw Locking

Unit No.	Shaft Diam.	Dimensions ⁱⁿ / _{mm}										Bolt Size In.	Bearing No.	Rubber Ring No.	Housing No.			
		h	a	e	b	s1	s2	g	w	Bi	n							
FHSPRZ201 -8-IL	1/2																	
FHSPRZ201 -12mm-IL	12mm																	
FHSPRZ202 -9-IL	9/16																	
FHSPRZ202 -10-IL	5/8	1	4 1/8	3	1	13/32	1/2	.148	2 1/16	0.89	0.256	5/16	FHS201 -8	RUBBER-4	PP-4Z-SETS-IL			
FHSPRZ202 -15mm-IL	15mm	25.40	104.76	76.2	25.40	10.32	12.70	3.76	52.39	22.50	6.50	FHS201 -12mm						
FHSPRZ203 -11-IL	11/16												FHS202 -9					
FHSPRZ203 -17mm-IL	17mm												FHS202 -10					
													FHS202 -15mm					
FHSPRZ204 -12-IL	3/4	1 1/8	4 19/64	3 3/8	1	7/16	7/16	.127	2 7/32	0.98	0.295	3/8	FHS203 -11	RUBBER-5	PP-5Z-SETS-IL			
FHSPRZ204 -13-IL	13/16	28.58	109.14	85.73	25.40	11.11	11.11	3.23	56.36	25.00	7.50	FHS203 -17mm						
FHSPRZ204 -20mm-IL	20mm												FHS204 -12					
FHSPRZ205 -12-IL	3/4												FHS204 -13	RUBBER-6	PP-6Z-SETS-IL			
FHSPRZ205 -13-IL	13/16												FHS204 -20mm					
FHSPRZ205 -14-IL	7/8	1 5/16	4 7/8	3 3/4	1 1/4	13/32	9/16	.238	2 5/8	1.06	0.295	3/8	FHS205 -12					
FHSPRZ205 -15-IL	15/16	33.34	123.83	95.25	31.75	10.32	14.29	6.05	66.68	27.00	7.50	FHS205 -13						
FHSPRZ205 -16-IL	1												FHS205 -14					
FHSPRZ205 -25mm-IL	25mm												FHS205 -15					
													FHS205 -16					
FHSPRZ206 -17-IL	1 1/16													FHS205 -25mm	RUBBER-7	PP-7Z-SETS-IL		
FHSPRZ206 -18-IL	1 1/8	1 9/16	5 3/4	4 1/4	1 1/4	17/32	3/4	.238	3 1/8	1.18	0.354	3/8	FHS206 -17					
FHSPRZ206 -19-IL	1 3/16	39.69	146.05	107.95	31.75	13.49	19.05	6.05	79.38	30.00	9.00	FHS206 -18						
FHSPRZ206 -20-IL	1 1/4(s)												FHS206 -19					
FHSPRZ206 -30mm-IL	30mm												FHS206 -20					

FHPRZ200 Eccentric Locking Collar

Unit No.	Shaft Diam.	Dimensions ⁱⁿ / _{mm}													Bolt Size In.	Bearing No.	Rubber Ring No.	Housing No.	
		h	a	e	b	s1	s2	g	w	L	n	m	i	W					
FHPRZ201 -8-IL	1/2																		
FHPRZ201 -12mm-IL	12mm																		
FHPRZ202 -9-IL	9/16																		
FHPRZ202 -10-IL	5/8	1	4 1/8	3	1	13/32	1/2	.148	2 1/16	1.13	0.256	0.49	0.3760	1.13	5/16	FH201 -8	RUBBER-4	PP-4Z-SETS-IL	
FHPRZ202 -15mm-IL	15mm	25.40	104.76	76.2	25.40	10.32	12.70	3.76	52.39	28.60	6.50	12.55	9.55	28.60	FH201 -12mm				
FHPRZ203 -11-IL	11/16															FH202 -9			
FHPRZ203 -17mm-IL	17mm															FH202 -10			
																FH202 -15mm			
FHPRZ204 -12-IL	3/4	1 1/8	4 19/64	3 3/8	1	7/16	7/16	.127	2 7/32	1.22	0.295	0.55	0.3776	1.26	3/8	FH203 -11	RUBBER-5	PP-5Z-SETS-IL	
FHPRZ204 -20mm-IL	20mm	28.58	109.14	85.73	25.40	11.11	11.11	3.23	56.36	31.00	7.50	13.91	9.59	32.00	FH203 -17mm				
																FH204 -12			
FHPRZ205 -13-IL	13/16																FH204 -20mm	RUBBER-6	PP-6Z-SETS-IL
FHPRZ205 -14-IL	7/8	1 5/16	4 7/8	3 3/4	1 1/4	13/32	9/16	.238	2 5/8	1.22	0.295	0.55	0.3740	1.50	3/8	FH205 -13			
FHPRZ205 -15-IL	15/16	33.34	123.83	95.25	31.75	10.32	14.29	6.05	66.68	31.00	7.50	14.00	9.50	38.10	FH205 -14				
FHPRZ205 -16-IL	1															FH205 -15			
FHPRZ205 -25mm-IL	25mm															FH205 -16			
																FH205 -25mm			
																FH206 -17			
FHPRZ206 -17-IL	1 1/16																FH206 -18	RUBBER-7	PP-7Z-SETS-IL
FHPRZ206 -18-IL	1 1/8	1 9/16	5 3/4	4 1/4	1 1/4	17/32	3/4	.238	3 1/8	1.41	0.354	0.58	0.4677	1.75	3/8	FH206 -19			
FHPRZ206 -19-IL	1 3/16	39.69	146.05	107.95	31.75	13.49	19.05	6.05	79.38	35.70	9.00	14.82	11.88	44.50	FH206 -20				
FHPRZ206 -20-IL	1 1/4(s)															FH206 -30mm			
FHPRZ206 -30mm-IL	30mm															FH206 -30mm			

Standard housing could be made in AISI 304 Stainless Steel. Combine with Stainless Steel bearing for maximum corrosion resistance. Example: SSFHSPR206-20-IL