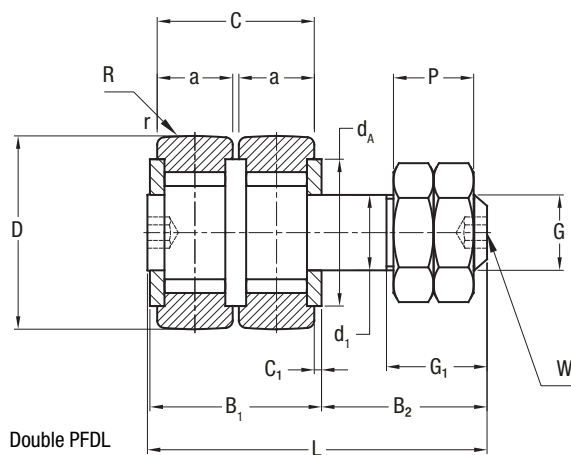
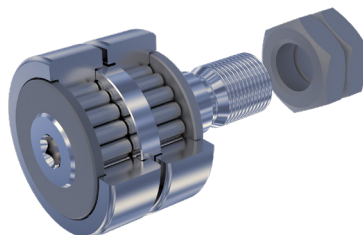


CAM FOLLOWERS

DOUBLE PFDL

For assembling on double contact cam movements.
Outer diameter of cam follower without stud from 24 to 32 mm



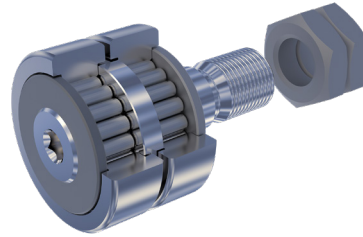
∅ outer D mm	Designation ¹⁾	d ₁ ²⁾ mm	L mm	B ₁ mm	B ₂ mm	Threading G mm	G ₁ mm	C mm	a mm	C ₁ mm	d _A mm	r mm	R ³⁾ mm
	PFDL												
24	PFDL 24.10	10	45	23	21.5	M10 x 1.25	12.5	21	10	1	17.9	1.6	200
28	PFDL 28.10	12	45	22	22.5	M12 x 1.5	13.5	21	10	0.5	20.5	1.6	200
32	PFDL 32.10	12	45	22	22.5	M12 x 1.5	13.5	21	10	0.5	24.5	1.8	250
32	PFDL 32.14	12	60	30	29.5	M12 x 1.5	19	29	14	0.5	24.5	1.8	250

- 1) Designation PFDL, cam follower with outer cylindrical ring
Designation PFD., cam follower with stud and outer convex rings
- 2) The diameter of the stud is calculated with h6 tolerance
- 3) Convex radius for the PFD version

CAM FOLLOWERS

DOUBLE PFDL

2.13



W mm	P mm	Load coefficients (N)			Speed limit with grease (min ⁻¹)	Weight Kg	Clamping torque Nm	∅ outer D mm
		Din C _w ⁴⁾	Din. F _r ⁵⁾	Stat. F _{or} ⁵⁾				
4	10	6700	2400	4400	3400	0.086	20	PFDL 24.10
5	12	7500	4100	7600	2900	0.116	26	PFDL 28.10
5	12	9800	4100	7600	2600	0.144	26	PFDL 32.10
5	12	13000	3000	5500	2600	0.199	26	PFDL 32.14

4) The load coefficient refers to each cam follower without stud of the two cam follower with stud components

5) With load applied to the opposite cam follower on the stud side