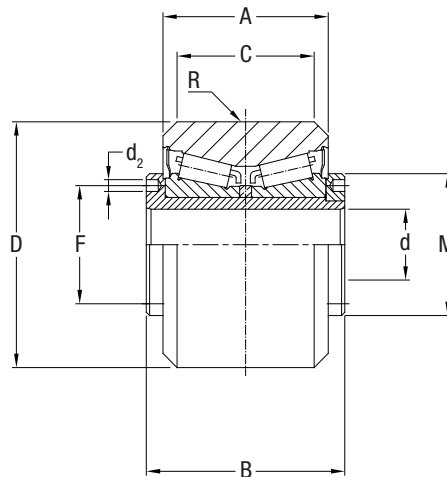
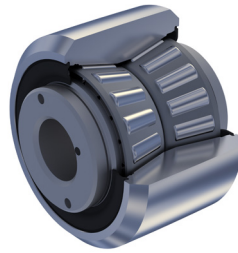


# GUIDE WHEELS

## FK

# 2.11

High load capacity cam followers without stud with tapered roller bearings.  
Outer diameter from 52 to 110 mmc



Type	Dimensions (mm)									Load coefficient (N)		Load limit		Weight Kg
	D	d <sup>1)</sup>	B	A	C	M	F	d <sub>2</sub>	R	Cw <sup>2)</sup>	Cw <sup>3)</sup>	Din. Fr	Stat For	
FK 52C	52	15	42	35	29	25	2.5	30	800	36000	42000	11900	22000	0.5
FK 62C	62	20	45	37	29	29	3	35	800	39000	48000	22100	40000	0.6
FK 72C	72	25	56	45	33	37	4	44	1200	54000	69000	31300	58000	1.2
FK 90C	90	28	64	53	45	42	4	49	1200	98000	134000	43800	80000	2.3
FK 110C	110	35	72	60	48	52	4	59	1200	131000	190000	55600	100000	3.9

- 1) Recommended tolerance of the clamping pivot: h7 (free coupling)
- 2) Coefficient of the calculation for the duration with base 1 million revs
- 3) Coefficient of the calculation for the duration with base 100 km
- 4) AISI 440 stainless steel version available (suffix NX). Inner rolling elements in steel for standard bearing (not stainless)
- 5) Version with Viton seals available (suffix V). Up to and inclusive of diameter size 90