

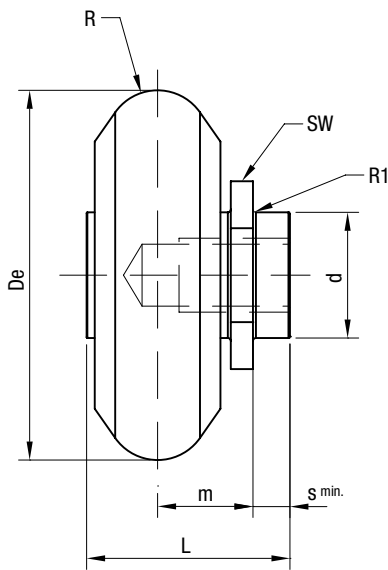
# C-LINE

## GUIDE ROLLERS RAN

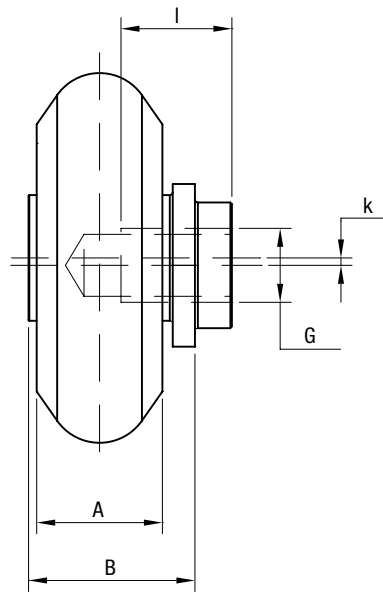
Floating guide rollers with balls.



### CONCENTRIC



### ECCENTRIC



| Type       |           | Dimensions (mm) |   |                 |                      |                      |         |   |      |    |      |    |     |    |      | Weight (g) | Guide |
|------------|-----------|-----------------|---|-----------------|----------------------|----------------------|---------|---|------|----|------|----|-----|----|------|------------|-------|
| concentric | eccentric | De              | R | d <sup>1)</sup> | m min. <sup>2)</sup> | m max. <sup>2)</sup> | R1 max. | S | L    | A  | B    | SW | G   | I  | k    |            |       |
| RAN 28     | RANR 28   | 23.5            | 3 | 10              | 5.4                  | 7.1                  | 0.4     | 2 | 11.4 | 6  | 9.4  | 13 | M5  | 8  | 0.5  | 22         | LS 28 |
| RAN 43     | RANR 43   | 35.5            | 5 | 12              | 7.8                  | 10.1                 | 0.4     | 3 | 18.1 | 10 | 15.1 | 17 | M8  | 11 | 0.75 | 76         | LS 43 |
| RAN 63     | RANR 63   | 50              | 7 | 18              | 11.7                 | 15.7                 | 0.4     | 5 | 27.5 | 17 | 22.5 | 24 | M10 | 15 | 1    | 237        | LS 63 |

1) Tolerance of mounting hole: H7

2) Maximum displacement of dimension m to ensure proper guide roller function and safety

| Type       |           | Dynamic load (N)             | Limit loads (N)       | Screw diameter G | Screw length (mm) | Torque wrench settings <sup>4)</sup> (Nm) |
|------------|-----------|------------------------------|-----------------------|------------------|-------------------|---|
| concentric | eccentric | C <sub>w</sub> <sup>3)</sup> | Radial F <sub>r</sub> |                  |                   |   |
| RAN 28     | RANR 28   | 2200                         | 1200                  | M5               | 10                | 7   |
| RAN 43     | RANR 43   | 6600                         | 2750                  | M8               | 14                | 12  |
| RAN 63     | RANR 63   | 14200                        | 6500                  | M10              | 20                | 35  |

3) C<sub>w</sub> = load for lifetime of 100 km

4) The tightening torques apply to non-lubricated threads; for lubricated threads the values have to be multiplied by 0.8

- Screws type (10.9); the use of self-locking safety washers is recommended
- Contact angle  $\alpha$  for load calculation: 55°
- Standard seals type RS