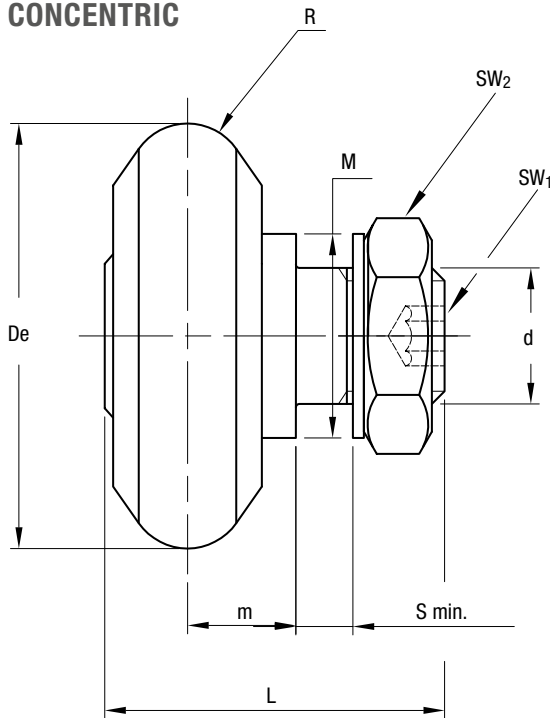


## GUIDE ROLLERS RCS

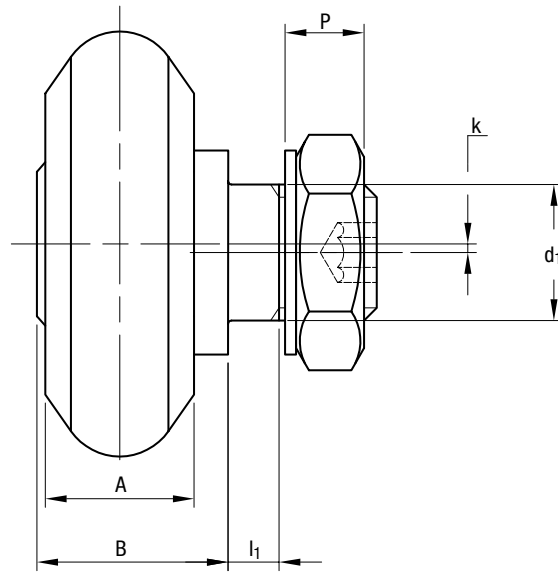
Guide rollers with balls for LS guide.



### CONCENTRIC



### ECCENTRIC



Type		Dimensions (mm)															Guide
concentric	eccentric	De	R	d <sub>1</sub> <sup>1)</sup>	d	m	S min.	P	L	A	B	l <sub>1</sub>	M	SW <sub>1</sub>	SW <sub>2</sub>	k	
RCS 28	RCSR 28	23.5	3	8	M8	6	2.5	4.8	18.5	6	10	3.5	12	3	13	0.5	LS 28
RCS 43	RCSR 43	35.5	5	10	M10 x 1.25	9	4.5	6	27.5	11	15	5.5	17.5	4	16	0.75	LS 43
RCS 63	RCSR 63	50	7	16	M16 x 1.5	12.75	5.25	9.2	39.5	17	22.25	6.25	24	6	24	1	LS 63

1) Tolerance of mounting hole: H7

Type		Dynamic load (N)	Limit loads (N)		Life coefficients		Torque wrench settings <sup>3)</sup> (Nm)	Weight (g)
concentric	eccentric	C <sub>w</sub> <sup>2)</sup>	Radial F <sub>r</sub>	Axial F <sub>a</sub>	X	Y		
RCS 28	RCSR 28	2200	1200	330	1	2.7	8	25
RCS 43	RCSR 43	6600	2750	850	1	2.2	20	80
RCS 63	RCSR 63	14200	6500	2200	1	2.8	64	255

2) C<sub>w</sub> = load for lifetime of 100 km

3) The tightening torques apply to non-lubricated threads; for lubricated threads the values have to be multiplied by 0.8

- Guide rollers will be supplied with washers and nuts (DIN 439B)
- Contact angle  $\alpha$  for the load calculation: 55°
- Standard seals type RS.