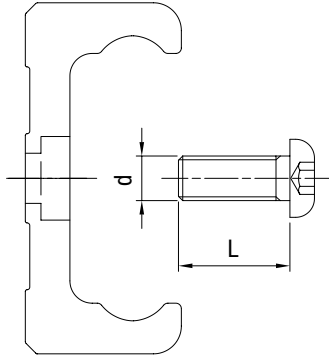


SCREW FOR RAILS WITH COUNTERBORE HOLES

Guides with counterbore holes come with complete set of shallow head screws DIN EN ISO 7380 (Class 10.9).

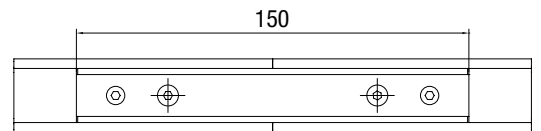
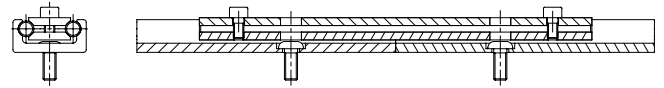


Guide	Screw diameter d	L	Torque wrench settings (Nm)
LS 28	M5 x 0.8	12	8
LS 43	M8 x 1.25	16	22
LS 63	M8 x 1.25	20	34

ALIGNMENT DEVICE ALS

For an easier mounting of two consecutive rails we recommend the use of alignment devices ALS.

Guide	Alignment device
LS 28	ALS 28
LS 43	ALS 43



INSTRUCTIONS

- Insert the screws into the holes of the guide without tightening
- Mount the alignment device and tighten its screws until it reaches the proper alignment
- Tighten the screws of the guides

C-LINE

GUIDE RAILS LS

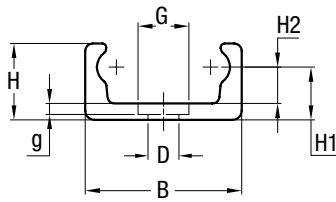
Rails totally in steel with internal hardened raceways.



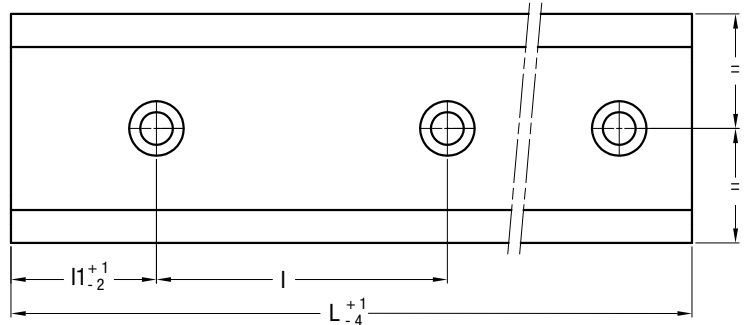
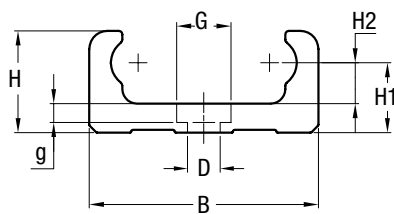
HOLE PATTERN A: BORING FOR COUNTERBORE SCREWS ACCORDING TO DIN EN ISO 7380

LS 28

LS 43



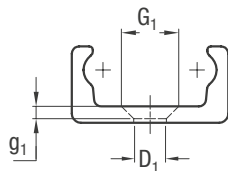
LS 63



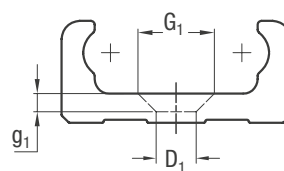
HOLE PATTERN B: BORING FOR COUNTERSUNK SCREWS ACCORDING TO EN ISO 10642.

LS 28

LS 43



LS 63



Type	Dimensions (mm)													Moment of inertia (cm ⁴)		Weight (kg/m)
	B	H	H1	H2	D	G	g	D ₁	G ₁	g ₁	l	l ₁	L max. 1)	J _x	J _y	
LS 28	28	12.5	9	5.5	6.6	11	2.1	5.5	10.6	2.6	80	40	4000	0.17	1.45	1.18
LS 43	43	21	14.5	10	9	15	2.5	9	17	4	80	40	4000	1.28	8.6	2.75
LS 63	63	28	19.25	11.25	9	15	4.5	11	21	5.5	80	40	4000	4.5	38.9	6.22

1) Longer rails will be fitted with finish-machined joints

RAIL DESIGN STANDARD

- Drawn, induction hardened raceways (MT)
- Surface zinc-plated (MT ... GZ)

FIXING HOLES

- Hole pattern according to catalogue (A or B)
- Hole pattern according to drawing (NZ)
- Without holes (NF)

SURFACE OPTIONS

- Chemically nickel-plated (NW)
- Uncoated, blasted

Example standard type: LS 43 MT 2480 AGZ
Screws DIN EN ISO 7380 (10.9) are included in delivery.