

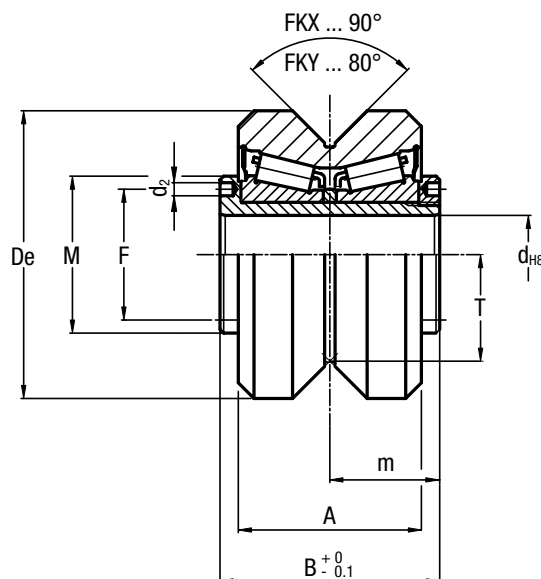
# V-LINE / FS SYSTEM

## GUIDE WHEELS FKY ..., FKY ...

Guide wheel with tapered roller bearings.  
The sides of the race are convex.



Available in stainless steel version.



Type	Dimensions (mm)									Weight (kg)
	De	d	T	m	A	B	F	d <sub>2</sub>	M	
FKY 52 C	52	15	19.1	21	35	42	25	2.5	30	0.5
FKY 62 C	62	20	22.1	22.5	37	45	29	3	35	0.6
FKY 72 C	72	25	25.5	28	45	56	37	4	44	1.2
FKX 90 C	90	28	32.5	32	53 56 <sup>1)</sup>	64	42	4	49	2.3
FKX 110 C	110	35	39.5	36	60 63 <sup>1)</sup>	72	52	4	59	3.9

<sup>1)</sup> Dimensions relating to the stainless-steel rollers (suffix NX)

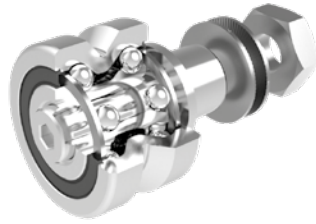
Type	Dynamic load (N)	Limit loads (N)		Life coefficients	
	C <sub>w</sub> <sup>2)</sup>	Radial F <sub>r</sub>	Axial F <sub>a</sub>	X	Y
FKY 52 C	41000	11900	4800	1	3.7
FKY 62 C	46000	19000	8300	1	3.5
FKY 72 C	66000	30000	12300	1	3.2
FKX 90 C	130000	41000	15300	1	3.8
FKX 110 C	185000	55000	20900	1	3.9

<sup>2)</sup> C<sub>w</sub> basic load for 100 km

- On request, the guide rollers can be supplied with external parts in stainless steel (suffix NX) and with Viton seals for operating temperatures up to 120°C (suffix V), not available for dimension FKX 110 C. Internal rolling elements in standard bearing steel
- To prevent rotation between roller and shaft a pin can be fitted in one of the holes "d2" positioned in the side flange
- Pressure angle  $\alpha$  for load calculation: guide rollers FKY 40° – guide rollers FKX 45°
- Standard seals: material NBR, RS type

## FLOATING GUIDE ROLLERS FRL ... EU

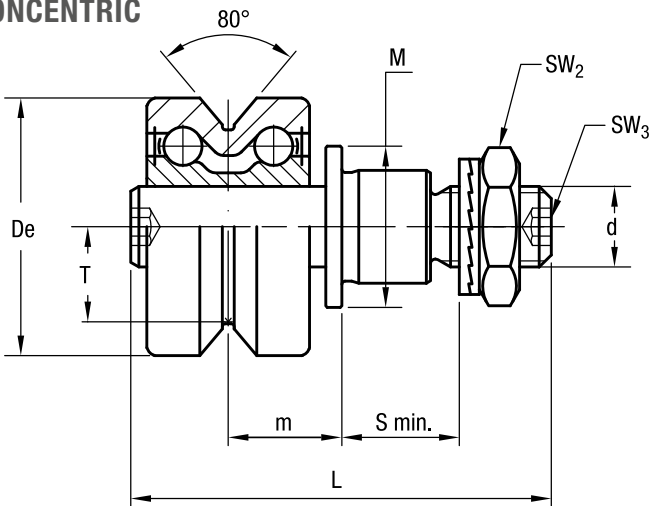
Floating guide rollers with ball bearings.  
The race ways are slightly convex.



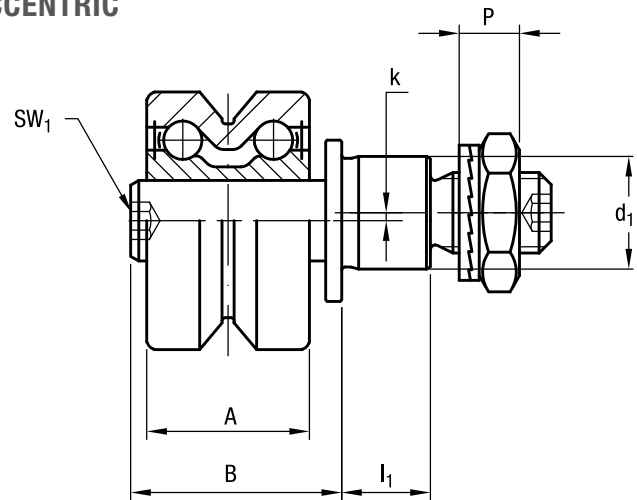
Available in stainless steel version.



### CONCENTRIC



### ECCENTRIC



Type		Dimensions (mm)																
concentric	eccentric	De	d <sub>1</sub> <sup>2)</sup>	d	T	S min.	P	L	A	B	I <sub>1</sub>	M	m min. <sup>3)</sup>	m max. <sup>3)</sup>	SW <sub>1</sub>	SW <sub>2</sub>	SW <sub>3</sub>	k
FRL 22 EU <sup>1)</sup>	FRLR 22 EU <sup>1)</sup>	22	9	M6 x 1.0	7.7	9	6.5	39.3	15	20.5	8	14	9	13	4	10	3	0.8
FRL 32 EU <sup>1)</sup>	FRLR 32 EU <sup>1)</sup>	32	14	M10 x 1.25	11.8	12	8.5	52.2	20.2	26.2	11	20	12.1	16.1	4	17	4	1
FRL 40 EU <sup>1)</sup>	FRLR 40 EU <sup>1)</sup>	40	16	M12 x 1.5	14.6	12	10.4	61.4	25	32.4	11	22	14.9	19.9	5	19	5	1
FRL 52 EU	FRLR 52 EU	52	21	M16 x 1.5	19.1	15	11.4	74	32	41	14	28	19	25	6	24	6	1.5
FRL 62 EU	FRLR 62 EU	62	27	M20 x 1.5	22.1	18.5	12.4	83.6	33.6	42.6	17.5	35	19.8	25.8	8	30	8	2

1) Available in stainless steel (NX) version

2) Housing bore tolerance: H7

3) To ensure a safe and proper functioning the dimension m must not be higher than m max.

Type		Dynamic load (N)	Limit loads (N)	Limit loads Inox version NX (N)	Torque wrench settings <sup>5)</sup> (Nm)	Weight <sup>6)</sup> (g)
		C <sub>w</sub> <sup>4)</sup>	Radial F <sub>r</sub>	Radial F <sub>r</sub>		
FRL 22 EU	FRLR 22 EU	2900	1050	900	3	46
FRL 32 EU	FRLR 32 EU	5800	1700	1500	20	127
FRL 40 EU	FRLR 40 EU	8500	3000	2700	26	233
FRL 52 EU	FRLR 52 EU	11700	7600	—	64	520
FRL 62 EU	FRLR 62 EU	13900	11000	—	120	776

4) C<sub>w</sub> = Basic load for 100 km

5) The torque wrench settings are given for non-lubricated threads; for lubricated threads multiply figure by 0.8

6) Weight without fittings

- Standard seals: material NBR, RS type
- Guide rollers include self-locking washers and hexagonal nut (DIN 439B)

- Pressure angle  $\alpha$  for load calculation: 40°.