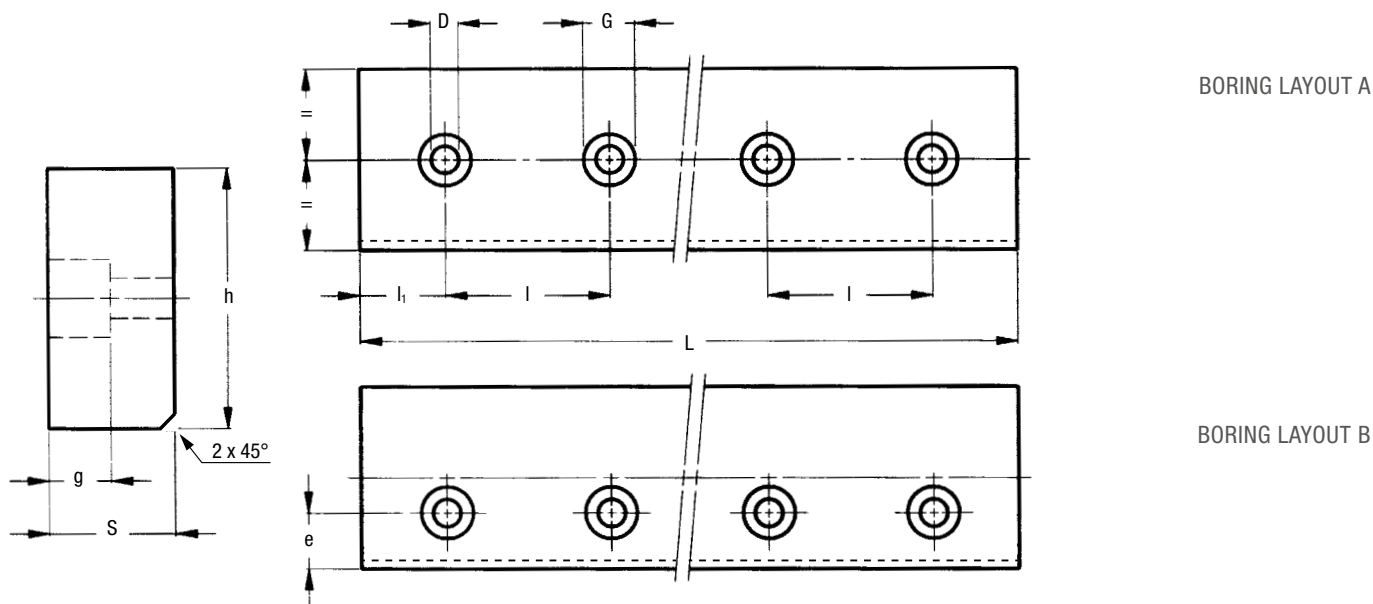
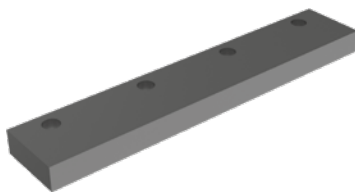


HEAVY-LINE – GP SYSTEM

GUIDE RAIL GP ... MC

Rail in steel, rough ground raceways.



Type	Dimensions (mm)								Weight ¹⁾ (kg/m)
	h ± 0.05	S ± 0.05	D	G	g	e	l	l ₁	
GP 2626 MC	26	26	9	15	9	²⁾	120	50	5.3
GP 3232 MC	32	32	9	15	9	²⁾	150	60	8.1
GP 3617 MC	36	17	6.5	11	6.8	12.5	120	50	4.8
GP 4321 MC	43	21	9	15	9	11.5	150	60	7
GP 5050 MC	50	50	18	26	17	²⁾	180	60	19.6
GP 6222 MC	62	22	9	15	9	21	150	60	10.7
GP 7232 MC	72	32	13.5	20	13	24	180	70	18.1
GP 8222 MC	82	22	13.5	20	13	20	180	70	14.2
GP 12050 MC	120	50	18	26	17	30	180	70	47

Max. length in single element L = 5800 mm.

Longer rails are made by juxtaposing several elements with ground end.

¹⁾ Weight without holes

²⁾ For boring layout A only

RAILS FINISHING

- Material: C60 or C45
- Induction hardened on four sides
- Surface finished by a rough grinding (MC)

HOLE LAYOUT

- Holes according to catalogue (A or B)
- Finishes to drawing (NZ)
- Without holes (NF)

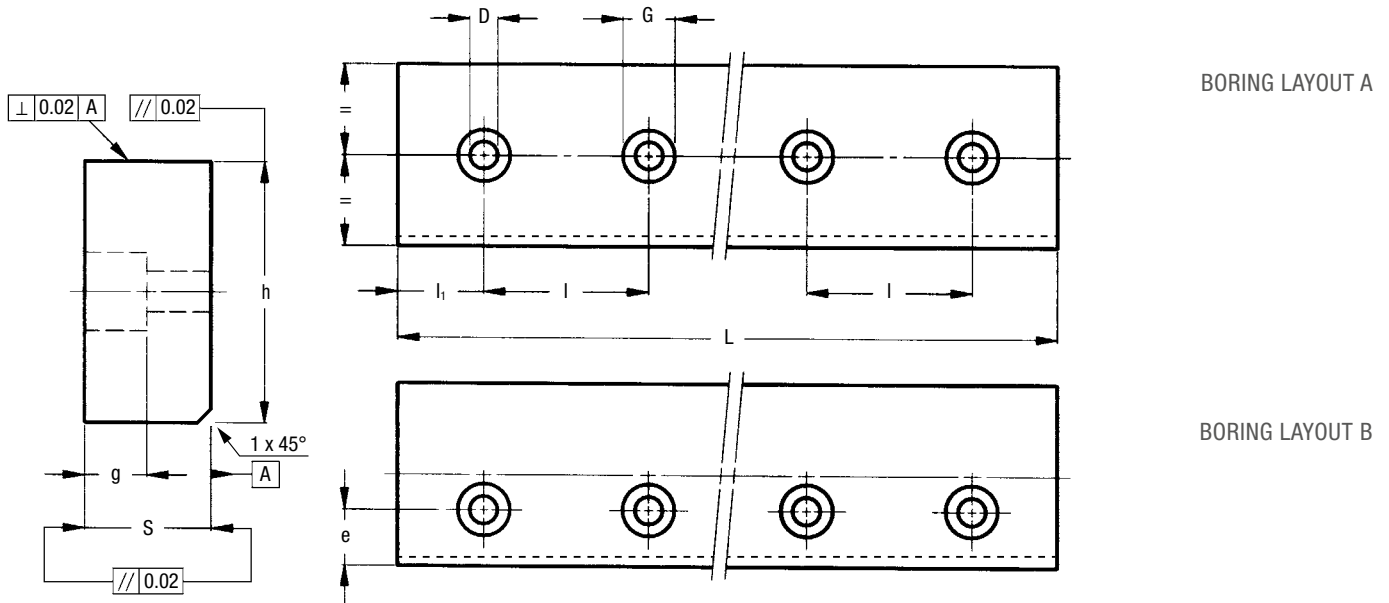
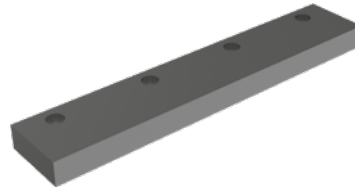
OPTIONAL FEATURES

- Ground one end: side of the first hole (1R), side of the last hole (2R)
- Ground both ends (RR)
- Chemical nickel plating (NW)

Example of standard designation: GP 6222 MC 4320 ASB, GP 6222 MC 4300 B

GUIDE GP ... M

Rail in steel, ground raceways.



Type	Dimensions (mm)								Weight ¹⁾ (kg/m)
	h ± 0.05	S ± 0.05	D	G	g	e	l	l ₁	
GP 2525 M	25	25	9	15	8.5	²⁾	120	50	4.9
GP 3131 M	31	31	9	15	8.5	²⁾	150	60	7.5
GP 3516 M	35	16	6.5	11	6.8	12	120	50	4.4
GP 4220 M	42	20	9	15	9	11	150	60	6.5
GP 6121 M	61	21	9	15	9	20.5	150	60	10
GP 7131 M	71	31	13.5	20	12.5	23.5	180	70	17.3
GP 8121 M	81	21	13.5	20	13	19.5	180	70	13.4

Max. length in single element L = 4020 mm.

Longer rails are made by juxtaposing several elements with ground end.

Maximum length with NW treatment on request

1) Weight without holes

2) For boring layout A only

RAILS FINISHING

- Material: C60 or C45
- Induction hardened on four sides
- Surface finished by a rough grinding (MC)

HOLE LAYOUT

- Holes according to catalogue (A or B)
- Finishes to drawing (NZ)
- Without holes (NF)

OPTIONAL FEATURES

- Ground one end: side of the first hole (1R), side of the last hole (2R)
- Ground both ends (RR)
- Chemical nickel plating (NW)

Example of standard designation: GP 6121 M 2070 A