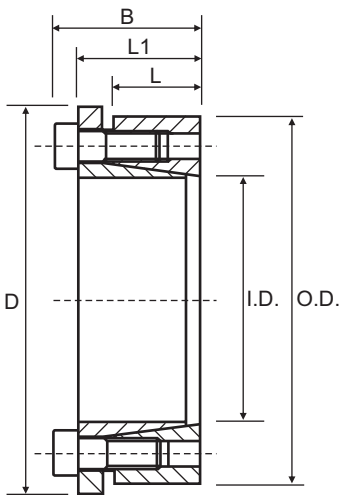


## CAL7 (Self-Centering)

Consists of one inside and one outside cone ring, which are joined by a set of screws. It is suitable for medium to high torques and is self-centering. Applications which require a very precise axial positioning are not recommended. Available for shaft diameters from 18 to 200 mm.

**Characteristics**  
 Medium-high torque  
 Economical  
 Quick installation



Part No.	I.D.	O.D.	L	L1	B	D	Torque Nm	Axial Force N
CAL7-18/47*	18	47	17	28	34	54	250	28000
CAL7-20/47	20	47	17	28	34	56	284	28000
CAL7-22/47	22	47	17	28	34	56	313	28000
CAL7-24/50	24	50	17	28	34	59	341	28000
CAL7-25/50	25	50	17	28	34	59	426	34000
CAL7-28/55	28	55	17	28	34	64	478	34000
CAL7-30/55	30	55	17	28	34	64	512	34000
CAL7-32/60	32	60	17	28	34	69	728	45000
CAL7-35/60	35	60	17	28	34	69	796	45000
CAL7-38/65	38	65	17	28	34	74	864	45000
CAL7-40/65	40	65	17	28	34	74	910	45000
CAL7-42/75	42	75	20	33	42	84	1544	74000
CAL7-45/75	45	75	20	33	42	84	1655	74000
CAL7-48/80	48	80	20	33	42	89	1765	74000
CAL7-50/80	50	80	20	33	42	89	1838	74000
CAL7-55/85	55	85	20	33	42	94	2311	84000
CAL7-60/90	60	90	20	33	42	99	2521	84000
CAL7-65/95	65	95	20	33	42	104	3093	95000
CAL7-70/110	70	110	24	40	50	119	4670	133000
CAL7-75/115	75	115	24	40	50	124	5004	133000
CAL7-80/120	80	120	24	40	50	129	5338	133000
CAL7-85/125	85	125	24	40	50	134	6380	150000
CAL7-90/130	90	130	24	40	50	139	6755	150000
CAL7-95/135	95	135	24	40	50	144	7923	167000
CAL7-100/145	100	145	26	44	56	154	9714	194000
CAL7-110/155	110	155	26	44	56	164	10686	194000
CAL7-120/165	120	165	26	44	56	174	13114	219000
CAL7-130/180	130	180	34	54	66	189	18943	291000
CAL7-140/190	140	190	34	54	68	199	20993	300000
CAL7-150/200	150	200	34	54	68	209	24992	333000
CAL7-160/210	160	210	34	54	68	219	29324	367000
CAL7-170/225	170	225	44	64	78	234	33989	400000
CAL7-180/235	180	235	44	64	78	244	35989	400000
CAL7-190/250	190	250	44	64	78	259	47485	500000
CAL7-200/260	200	260	44	64	78	269	49984	500000

**Torque** = Maximum transmittable torque when axial force is zero.  
**Axial Force** = Maximum axial force when transmittable torque is zero.

**For CAL7 use the following tolerances**

h8 for the shaft  
 H8 for the hub

\* Discontinued size, Limited stock available  
 All dimensions in mm unless otherwise stated