

Carter Polycoated Bearings

Carter has a complete line of polycoated bearings in stock. Polycoated bearings can be used for standard and specialized applications where noise reduction, reduced wear and non-marking are important factors in operations.

Food-grade polyurethane available on stainless bearings

Reduced wear on cam tracks

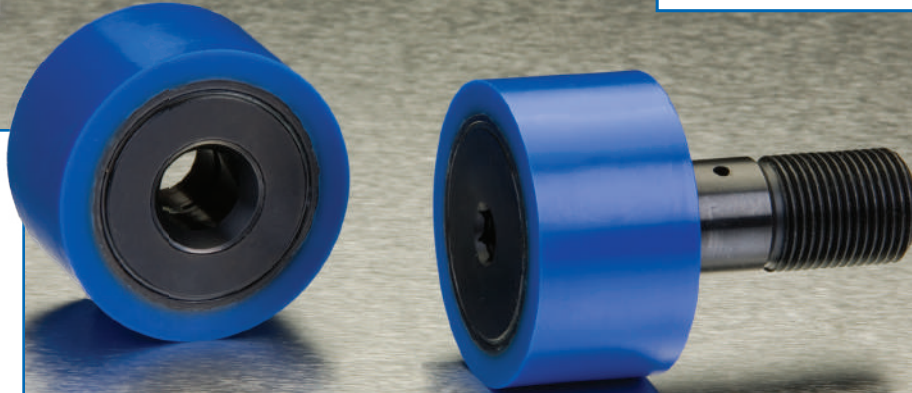
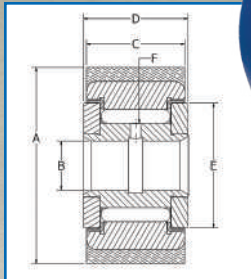
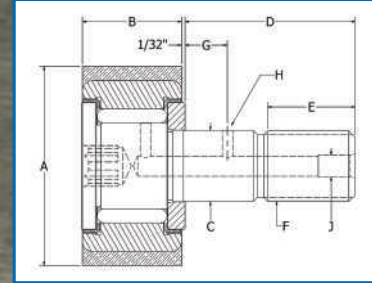
Other colors/durometers available

Noise reduction

Non-marking material

Improved traction

Short lead times



Needle Bearing Cam Followers — Standard Urethane

Part Number		Roller		Stud				Lubrication			Other Specs.		
		A	B	C	D	E	F	G	H	J			
Size	Cylindrical	Roller O.D. +.005 -.005	Roller Width +.005 -.005	Stud Dia. +.001 -.000	Stud Length +.010 -.010	Min. Eff. Thread Length	Thread Class	Oil Hole Cent	Oil Hole Dia.	Lube Fitting Size	Min. Boss Dia.	Recom. Bore +.0005 -.0000	**Recom. Torque Inch Pounds
3/4	CRT-24-SB	.750	.375	.190	.625	.250	10-32	~	~	~	19/64	.1900	15
1	CRT-32-SB	1.000	.500	.375	.875	.375	3/8-24	1/4	3/32	3/16	1/2	.3750	95
1 1/4	CRT-40-SB	1.250	.625	.4375	1.000	.500	7/16-20	1/4	3/32	3/16	5/8	.4375	250
1 1/2	CRT-48-SB	1.500	.750	.500	1.250	.625	1/2-20	5/16	3/32	3/16	3/4	.5000	350
1 3/4	CRT-56-SB	1.750	.875	.625	1.500	.750	5/8-18	3/8	3/32	3/16	57/64	.6250	650
2	CRT-64-SB	2.000	1.000	.750	1.750	.875	3/4-16	7/16	3/32	3/16	1 3/64	.7500	1250
2 1/4	CRT-72-SB	2.250	1.250	.875	2.000	1.000	7/8-14	1/2	1/8	3/16	1 13/64	.8750	1500

**Clamping torque is based on dry threads. If threads are lubricated, use half of values shown

Cam Yoke Rollers – Standard Urethane

Part Number		Roller				Other Specs.		
		A	B	C	D	E	F	
Size	Cylindrical	Roller O.D. +.005 -.005	Bore +.0002 -.0004	Roller Width +.005 -.005	Total Width +.005 -.010	Flange O.D. Ref.	Oil Hole Dia.	Recom. Shaft Diameter +/- .0002
1	YRT-32-S	1.000	.250	.500	.5625	5/8	3/32	.2497
1 1/4	YRT-40-S	1.250	.3125	.625	.6875	23/32	3/32	.3122
1 1/2	YRT-48-S	1.500	.375	.750	.8125	1	3/32	.3747
1 3/4	YRT-56-S	1.750	.4375	.875	.9375	1 1/8	3/32	.4372
2	YRT-64-S	2.000	.500	1.000	1.0625	1 1/4	3/32	.4997
2 1/4	YRT-72-S	2.250	.625	1.250	1.3125	1 1/2	3/32	.6247

**Clamping torque is based on dry threads. If threads are lubricated, use half of values shown. 100% 440C stainless construction. Please call for availability on eccentric or crowned variations. Food grade grease standard. Other lubricants are available.

