

# CARTER Manufacturing

## Bearings Are OUR Business

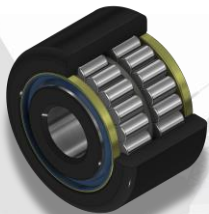
ISO 9001:2015  
PTDA Member

### Double Row Needle Bearings

### CDR



| PART #  | ROLLER              |                     | STUD                 |                       |                           |                             | APPROX. WEIGHT (LBS) |                       |
|---------|---------------------|---------------------|----------------------|-----------------------|---------------------------|-----------------------------|----------------------|-----------------------|
|         | D<br>+.000<br>-.001 | B<br>+.000<br>-.005 | SD<br>+.001<br>-.000 | SL<br>SLANK<br>LENGTH | K<br>SHOULDER<br>DIAMETER | TL<br>Eff. THREAD<br>LENGTH |                      | THREAD<br>CLASS<br>2A |
| CDR-150 | 1.500               | .875                | .6250                | 1.500                 | .750                      | .750                        | 5/8-18               | .16                   |
| CDR-175 | 1.750               | 1.000               | .7500                | 1.750                 | 1.00                      | .875                        | 3/4-16               | .83                   |
| CDR-200 | 2.000               | 1.250               | .8750                | 2.00                  | 1.125                     | 1.000                       | 7/8-14               | 1.32                  |



### YDR

| PART #  | ROLLER              |                     | D<br>INSIDE DIAMETER |       |       | B<br>OVERALL<br>WIDTH<br>+.005<br>-.010 | F<br>SHAFT<br>SHOULDER<br>(REF) | APPROX. WEIGHT (LBS.) |
|---------|---------------------|---------------------|----------------------|-------|-------|---|---------------------------------|-----------------------|
|         | D<br>+.000<br>-.001 | B<br>+.000<br>-.005 | NOM.                 | MIN.  | MAX.  |   |                                 |                       |
| YDR-150 | 1.500               | .875                | 7/16                 | .4371 | .4377 | .9375                                   | .750                            | .370                  |
| YDR-175 | 1.750               | 1.000               | 1/2                  | .4996 | .5002 | 1.0625                                  | 1.000                           | .580                  |
| YDR-200 | 2.00                | 1.250               | 5/8                  | .6246 | .6252 | 1.3125                                  | 1.125                           | .920                  |

| Product ID       | Static Capacity (lbf) | Limiting Speed (RPM) | Cross Section Thickness (approx. in.) |
|------------------|-----------------------|----------------------|---------------------------------------|
| Single YNB-48-S  | 11,280                | 2,500                | .244                                  |
| Double YDR-150-S | 7,000                 | 6,200                | .192                                  |
| Single YNB-56-S  | 15,840                | 2,200                | .313                                  |
| Double YDR-175-S | 10,500                | 4,700                | .188                                  |
| Single YNB-64-S  | 21,140                | 1,400                | .375                                  |
| Double YDR-200-S | 17,200                | 4,100                | .227                                  |

### CARTER SPECIALIZES IN CUSTOM BEARINGS

Modifications to CARTER'S standard single and double row bearings such as:

- Custom materials/finishes
- High/low temperature modifications
- Special re-lube port options
- Special laser-etched markings
- Custom stud lengths & roller widths

CARTER Manufacturing  
1725 Airpark Drive  
Grand Haven, Michigan 49417



SALES: 616.842.8760  
SALES FAX 800.842.0644  
carterbearings.com