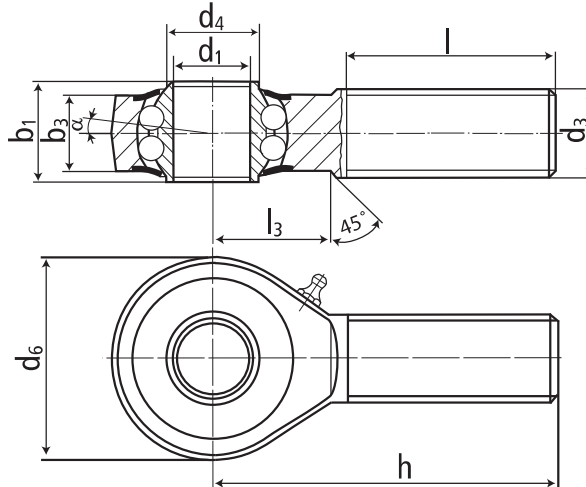




male thread;
long-term
lubrication,
low maintenance,
shields,
adapter sizes
according to
DIN ISO 12240-4,
series K



DURBAL® heavy-duty rod ends with integral self-aligning ball bearing in stainless steel



rod end housing:
stainless steel 1.4034, hardened, bearing
race superfinished, rolled thread

inner ring:
stainless steel, hardened,
surface superfinished

lubrication:
aluminium-complex-soap-grease,
temperature range -45 °C to +120 °C,
approval according to USDA H1

lubrication fitting:
DIN 3405 D1/A (sizes 6 to 10)
DIN 71 412 H1 (sizes 12 to 20)

bearing clearance:
10 - 30 µm radial

tolerances:
see page 10

order number				measurements [mm]						
type	right hand thread	left hand thread		d ₁	d ₃	d ₄	d ₆	b ₁	b ₃	h
BRM 06 -60	-501	-502		6	M 6	9,0	20	9	6,75	36
BRM 08 -60	-501	-502		8	M 8	10,5	24	12	9,0	42
BRM 10 -60	-501	-502		10	M 10	12,0	28	14	10,5	48
BRM 12 -60	-501	-502		12	M 12	14,5	32	16	12,0	54
BRM 16 -60	-501	-502		16	M 16	19,0	42	21	15,0	66
BRM 20 -60	-501	-502		20	M 20 x 1,5	24,5	50	25	18,0	78

type	measurements [mm]			weight [kg]	calculation- factors		rotational speed limit n _{max} [min ⁻¹]	basic load rating dyn. stat.	
	l	l ₃	α [°]		Y	Y ₀		C [N]	C ₀ [N]
BRM 06	22	12	8,0	0,019	2,09	2,19	1350	1900	450
BRM 08	25	15	8,5	0,036	1,80	1,89	1300	2800	700
BRM 10	29	15	8,0	0,060	1,90	1,81	1225	3100	1000
BRM 12	33	19	7,5	0,087	1,74	1,82	1125	3450	1250
BRM 16	40	22	8,0	0,190	2,24	2,35	975	4250	1600
BRM 20	47	28	7,0	0,338	2,46	2,58	825	5350	2300