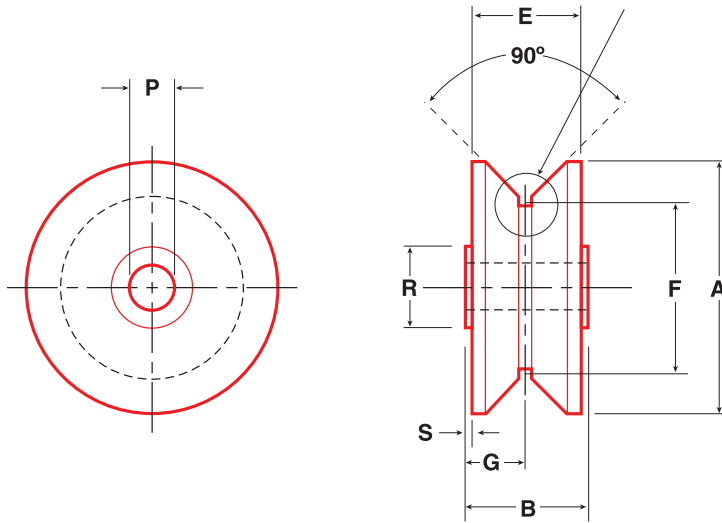


V-Grooved Yoke Style - Inch Sizes

See page 11 for details of design recommendations for roller on rail.



Part No.	Item No.	A	B	E	F	G	P		R	S	Ball or Tapered Roller Bearing	Bearing Capacity Radial Load (lbs)			Bearing Static Thrust Capacity (lbs)	Approx Weight (lbs)
		Roller Dia	Roller Width	Tread Width	Point Dia	Groove Location	Bore		Shldr Dia	Shldr Length		3000 hrs L10 life @ 100 RPM	500 hrs L10 life @ 33-1/3 RPM	Static Limit		
							Norm	Tol								
VLRY-2-1/2	90262	2.500	0.937	0.875	1.750	0.468	0.437		0.875	0.031	BB	710	1850	780	480	1.0
VLRY-3	90263	3.000	1.312	1.250	2.062	0.656	0.625		1.125	0.031	BB	1300	3400	1810	1120	2.1
VLRY-3-1/2	90109	3.500	1.562	1.500	2.250	0.781	0.750		1.250	0.031	BB	1560	4090	1810	1120	2.8
VLRY-3-3/4	96655	3.750	1.562	1.500	2.500	0.785	0.750		1.250	0.031	TRB	4570	10880	7630	4570	3.1
VLRY-4-1/2	96266	4.500	1.812	1.750	3.000	0.906	1.000		1.750	0.031	TRB	6000	14270	20000	12000	5.0
VLRY-5	96279	5.000	2.062	2.000	3.500	1.030	1.125		2.000	0.031	TRB	7390	17590	27200	13100	7.6
VLRY-5-1/2	96283	5.500	2.312	2.250	4.000	1.156	1.250		2.250	0.031	TRB	7390	17590	27200	13100	11.2
VLRY-6-1/2	96287	6.500	2.875	2.750	5.000	1.437	1.750	+0.0005	3.500	0.062	TRB	15060	35840	^46030	^23010	18.8
VLRY-7-1/2	96291	7.500	3.375	3.250	6.000	1.687	2.250	-0.0000	3.500	0.062	TRB	15060	35840	^53860	^26930	30.5
VLRY-8-1/2	96292	8.500	3.875	3.750	7.000	1.937	2.750		4.250	0.062	TRB	17830	42430	^61710	^30850	44.7
VLRY-9-1/2	96297	9.500	4.500	4.250	8.000	2.250	3.255		4.750	0.125	TRB	35250	*83890	^69540	^34770	64.2
VLRY-10-1/2	96300	10.500	5.000	4.750	9.000	2.500	3.755	+0.0010	5.500	0.125	TRB	56400	*134230	^77380	^38690	77.5
VLRY-11-1/2	96302	11.500	5.500	5.250	10.000	2.750	4.255	-0.0000	6.500	0.125	TRB	58080	*138240	^85220	^42610	112.2

^Surface strength of roller OD

*Exceeds surface strength of roller OD

Other sizes available upon request
 For HEAVY DUTY SHAFTS see pages 60-61
 Refer to INSTALLATION NOTES on pages 83-85
 LOAD CAPACITIES ARE BASED ON UNIFORM AND STEADY LOADING.