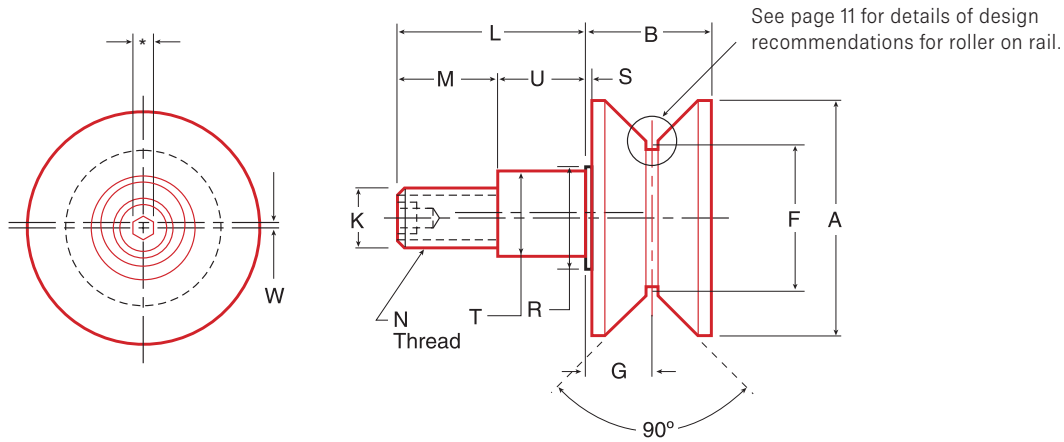
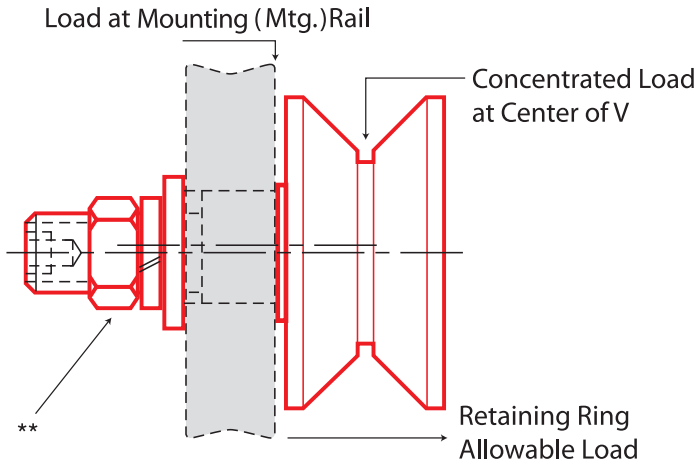


V-Grooved - Eccentric Stud Style - Metric Sizes (mm)



Part No.	Item No.	A	B	F	G	K	L	M	N	R	S	T	U	W	Rec. Mtg. Hole Size
		Roller Dia	Roller Width	Point Dia	Groove Location	Stud Dia	Stud Length	Thread Length	Thread	Shldr Dia	Shldr Length	Eccentric Dia	Eccentric Length		
HPVE-26	97392	40	20	26	10	10	23	13	M10×1	17.1	0.6	13.00	10	0.5	13.02
HPVE-32	97393	50	22	32	11	12	25	14	M12×1.5	17.5	0.8	15.00	11	0.5	15.02
HPVE-40	95951	60	33	40	17	14	40	24	M14×2	28.5	1.6	22	16	1	22.02
HPVE-62	95953	90	44.5	62	23	24	58	38	M24×3	43	1.6	28	20	1.5	28.02
HPVE-62-1	95952	90	44.5	62	23	24	49.5	27.5	M24×1.5	43	1.6	28	22	1	28.02
HPVE-76	95955	120	50.5	76	26	24	70	41	M24×1.5	50	1.6	35	29	1.5	35.02
HPVE-100	95956	140	50.5	100	26	24	70	41	M24×1.5	50	1.6	35	29	1.5	35.02
HPVE-125	95957	165	76	125	37.8	48	105	55	M48×5	82.5	1.6	64	50	1.5	64.02

**Lock washer and jam nut available at additional cost. For size see "N" dimension.
 For stud socket size, see page 85.
 Other sizes available upon request



	Ball or Tapered Roller Bearings	Bearing Radial Load (N)			Bearing Capacity, Static Thrust (N)	Stud Capacity (N)		Retaining Ring Capacity (N)	Approx Weight (kg)	Part No.
		3000 hrs L10 life @ 100 RPM	500 hrs L10 life @ 33 1/3 RPM	Static Limit		Bending = 0.75Sy Bend @V	Shear = 0.75 x 0.5 x Sy Load @ Mtg Rail			
	BB	1070	2790	1000	620	2220	8780	1700	0.26	HPVE-26
	BB	2300	6010	2690	1660	3960	14450	2090	0.30	HPVE-32
	BB	4680	12260	4900	3030	5480	25690	2090	0.64	HPVE-40
	BB	8810	23080	10090	6230	15800	64850	5960	1.57	HPVE-62
	BB	8810	23080	10090	6230	15800	64850	5960	1.57	HPVE-62-1
	TRB	26670	63480	88960	53380	23520	113910	N/A	3.43	HPVE-76
	TRB	26670	63480	88960	53380	23630	113910	N/A	4	HPVE-100
	TRB	62210	148070	^216290	^108140	130770	411830	N/A	4.72	HPVE-125

^Surface strength of roller OD

LOAD CAPACITIES ARE BASED ON UNIFORM AND STEADY LOADING.