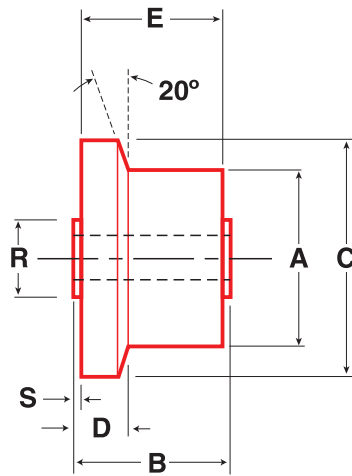
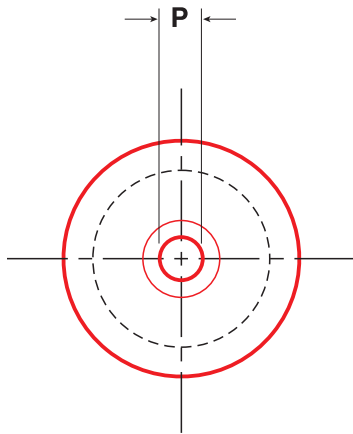


Flanged - Yoke Style - Metric Sizes (mm)



Part No.	Item No.	A	B	C	D	E	P	R	S	Ball or Tapered Roller Bearings	Bearing Radial Capacity (N)			Bearing Static Thrust Capacity (N)	Approx Weight (kg)
		Roller Dia	Roller Width	Flange Dia	Flange Thickness	Tread Width	Bore +0.00 -0.02	Shldr Dia	Shldr Length		3000 hrs L10 life @ 100 RPM	500 hrs L10 life @ 33 1/3 RPM	Static Limit		
HPJA-40	90274	40	23	54	6.0	22	10	22.0	0.5	BB	3140	8220	3460	2140	0.19
HPJA-50	90275	50	33	68	10.0	32	15	28.0	0.5	BB	5780	15140	8070	4980	0.64
HPJA-62	97298	62	40	78	14.0	38	20	32.0	1.0	TRB	20330	48390	33940	20330	1.09
HPJA-62-2	90276	62	40	78	14.0	38	20	32.0	1.0	BB	9490	24880	11240	6940	1.09
HPJA-76	96209	76	46	98	13.5	44	25	44.5	1.0	TRB	26670	63480	88960	53380	1.24
HPJA-80	96210	80	46	102	13.5	44	25	44.5	1.0	TRB	26670	63480	88960	53380	1.71
HPJA-85	96211	85	46	107	13.5	44	25	44.5	1.0	TRB	26670	63480	88960	53380	1.95
HPJA-90	96212	90	56	112	13.5	54	30	57.2	1.0	TRB	32870	78240	120990	58270	2.37
HPJA-100	96213	100	56	122	13.5	54	30	57.2	1.0	TRB	32870	78240	120990	58270	3.43
HPJA-125	96214	125	71	148	18.2	68	45	82.6	1.5	TRB	62210	148070	230860	144570	5.72
HPJA-150	96215	150	73	173	18.2	70	55	88.9	1.5	TRB	66990	159430	250880	147240	9.56
HPJA-200	96217	200	79	223	18.2	76	70	108.0	1.5	TRB	79300	188740	354970	215290	20.78
HPJA-250	96219	250	79	273	18.2	76	70	108.0	1.5	TRB	79300	188740	354970	215290	37.25

For heavy duty shafts, see page 77
 Other sizes available upon request
 Refer to INSTALLATION NOTES on pages 83-85
 LOAD CAPACITIES ARE BASED ON UNIFORM AND STEADY LOADING.