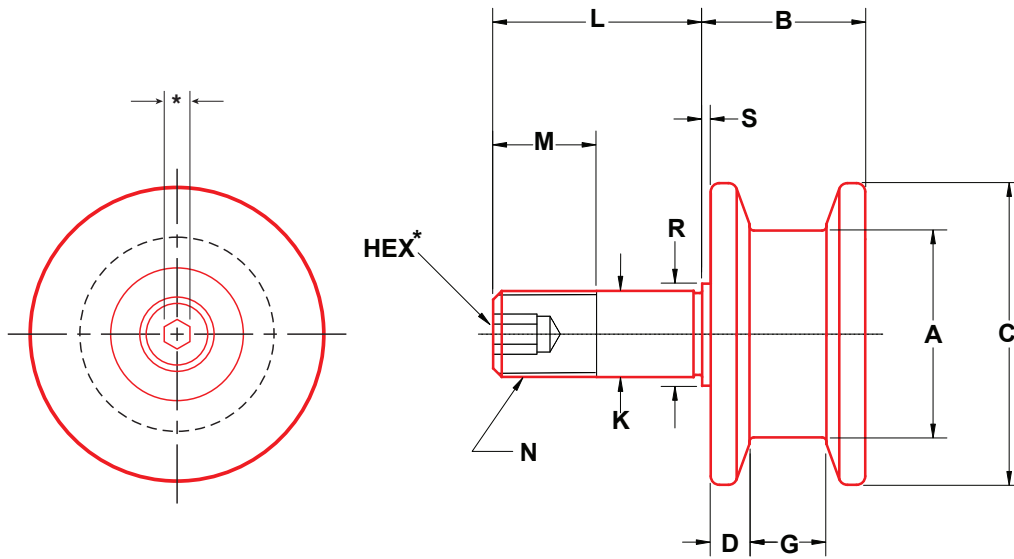


# Double Flanged - Concentric Stud Style, Inch Sizes



Part No.	Item No.	A	B	C	D	G	K	L	M	N	R	S	
		Roller Dia	Roller Width	Flange Dia	Flange Thickness (Both Sides)	Groove Width	Stud Dia +0.000 -0.001	Stud Length	Thread Length	Thread	Shoulder Dia	Shoulder Length	
<b>FFLR-1-1/2-4</b>	90670	1.500	1-3/16	2-3/16	0.281	0.558	0.625	1-1/2	3/4	5/8-18	3/4	1/16	
<b>FFLR-2-4</b>	90671	2.000	1-11/16	2-11/16	0.531	0.558	0.875	2	1-1/8	7/8-14	1	1/16	
<b>FFLR-2-1/2-4</b>	90672	2.500	1-11/16	3-3/16	0.531	0.562	1.000	2-1/4	1-1/2	1-14	1-1/4	1/16	
<b>FFLR-3-4</b>	90673	3.000	2	3-15/16	0.531	0.874	1.250	2-1/2	1-3/4	1-1/4-12	1-3/4	1/16	

Other sizes available on request.  
 Assemblies are provided with jam nuts and lock washers.  
 \*For stud hex socket size, see page 85.



Rec. Mtg. Hole Size	Mounting Member Thickness		Ball or Tapered Roller Bearings	Bearing Capacity Radial Load (lbs)			Thrust Capacity, Static Limit (lbs)	Stud Capacity (lbs)	Retaining Ring Capacity (lbs)	Approx Weight (lbs)	Part No.
	+0.001 -0.000	Max		Min	3000 hrs L10 life @ 100 RPM	500 hrs L10 life @ 33 1/3 RPM					
0.626	1	3/4	BB	1050	2760	1100	680	1374	470	0.9	<b>FFLR-1-1/2-4</b>
0.876	1-1/4	7/8	BB	1460	3826	1620	1000	3984	910	2.3	<b>FFLR-2-4</b>
1.001	1-1/4	3/4	BB	1979	5187	2268	1400	3694	1340	3.5	<b>FFLR-2-1/2-4</b>
1.251	1-1/4	1	TRB	5990	14270	12263	12000	12260	N/A	6.0	<b>FFLR-3-4</b>

LOAD CAPACITIES ARE BASED ON UNIFORM AND STEADY LOADING.