

Stainless Steel Eccentric Stud Plain Style, Flanged, V-Grooved - Inch Sizes

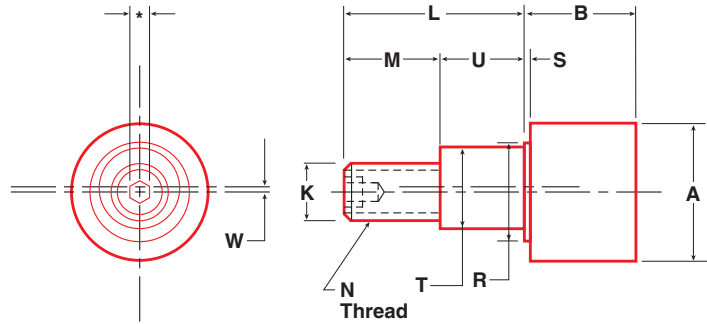
Use where corrosive or other conditions make standard steel rollers unsuitable.

- All-stainless construction
- Corrosion resistant
- Tread 440C & hardened to 55-60Rc
- Stud & cap 300 grade stainless steel

Applications:

- Chemical Treatment
- Tank Building
- Food Processing
- Aerospace
- Marine
- Waste Treatment
- Pharmaceutical

Plain Eccentric Stud



PLAIN

Part No.	Item No.	A	B	K	L	M	N	R	S	T	U	W
		Roller Dia	Roller Width	Stud Dia	Stud Length	Thread Length	Thread	Shoulder Dia	Shoulder Length	Eccentric Dia	Eccentric Length	
		+0.000 -0.001								+0.001 -0.001	+0.000 -0.010	
PLRSE 1	97896	1.000	0.781	0.437	1.000	0.500	7/16"-20	0.750	0.031	0.625	0.500	0.030
PLRSE 1-1/4	97897	1.250	0.844	0.500	1.250	0.625	1/2"-20	0.812	0.031	0.687	0.625	0.030
PLRSE 1-1/2	97898	1.500	1.188	0.625	1.500	0.770	5/8"-18	1.125	0.062	0.875	0.730	0.030
PLRSE 1-3/4	90241	1.750	1.188	0.750	1.750	0.875	3/4"-16	1.240	0.062	1.000	0.855	0.030
PLRSE 2	97899	2.000	1.688	0.875	2.000	1.020	7/8"-14	1.500	0.062	1.187	0.980	0.030
PLRSE 2-1/2	97900	2.500	1.688	1.000	2.250	1.145	1"-14	1.687	0.062	1.375	1.105	0.030

FLANGED

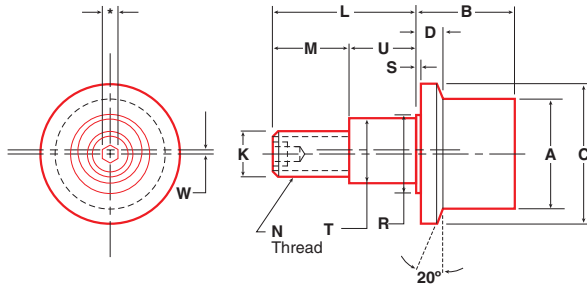
Part No.	Item No.	A	B	C	D	K	L	M	N	R	S	T	U	W
		Roller Dia	Roller Width	Flange Dia	Flange Thickness	Stud Dia	Stud Length	Thread Length	Thread	Shoulder Dia	Shoulder Length	Eccentric Dia	Eccentric Length	
												+0.001 -0.001	+0.000 -0.010	
FLRSE 1	97965	1.000	0.781	1.375	0.219	0.437	1.000	0.500	7/16"-20	0.750	0.031	0.625	0.500	0.030
FLRSE 1-1/4	97966	1.250	0.844	1.563	0.219	0.500	1.250	0.625	1/2"-20	0.812	0.031	0.687	0.625	0.030
FLRSE 1-1/2	97967	1.500	1.188	2.188	0.343	0.625	1.500	0.770	5/8"-18	1.125	0.062	0.875	0.730	0.030
FLRSE 2	97968	2.000	1.688	2.688	0.593	0.875	2.000	1.020	7/8"-14	1.500	0.062	1.187	0.980	0.030
FLRSE 2-1/2	97969	2.500	1.688	3.188	0.593	1.000	2.250	1.145	1"-14	1.687	0.062	1.375	1.105	0.030

V-GROOVED

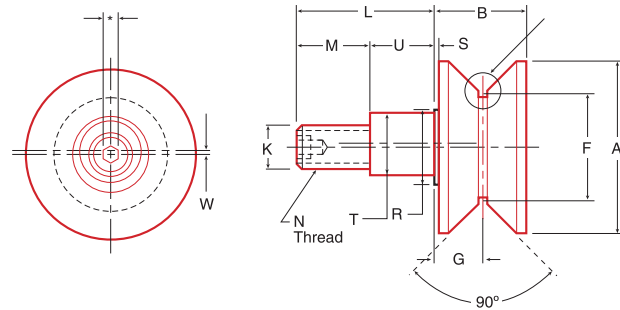
Part No.	Item No.	A	B	F	G	K	L	M	N	R	S	T	U	W
		Roller Dia	Roller Width	Point Dia	Groove Location	Stud Dia	Stud Length	Thread Length	Thread	Shoulder Dia	Shoulder Length	Eccentric Dia	Eccentric Length	
												+0.001 -0.001	+0.000 -0.010	
VLRSE 1-1/2	97997	1.500	0.781	1.125	0.391	0.437	1.000	0.500	7/16"-20	0.750	0.031	0.625	0.500	0.03
VLRSE 2	97998	2.000	0.844	1.375	0.422	0.5	1.250	0.625	1/2"-20	0.812	0.031	0.687	0.625	0.03
VLRSE 2-1/2	97999	2.500	1.312	1.500	0.687	0.75	1.750	0.875	3/4"-16	1.240	0.062	1.000	0.855	0.03

* Stainless steel assemblies are provided with lock washer and jam nut.

Flanged Eccentric Stud



V-Grooved Eccentric Stud



See page 11 for details of design recommendations for roller on rail.

PLAIN

Rec. Mtg. Hole Size	Mounting Member Thickness		Bearing Capacity Radial Load (lbs)			Thrust Capacity, Static Limit (lbs)	Stud Capacity (lbs)			Retaining Ring Capacity (lbs)	Approx Weight (lbs)	Part No.
			3000 hrs L10 life @ 100 RPM	500 hrs L10 life @ 33-1/3 RPM	Radial Static Limit		Bending=0.75 Sy		Shear=0.75 x 0.5 x Sy			
	Max	Min					Bend @ B/2	Bend @ End of Roller				
+0.001 -0.000												
0.627	0.625	0.500	350	920	390	240	190	80	780	150	0.4	PLRSE 1
0.689	0.750	0.625	480	1250	520	320	350	160	1290	230	0.5	PLRSE 1-1/4
0.877	0.875	0.750	940	2470	1110	690	550	260	2300	350	0.7	PLRSE 1-1/2
1.002	1.000	0.875	940	2470	1110	690	550	260	2300	350	1.0	PLRSE 1-3/4
1.189	1.125	1.000	1330	3480	1750	1080	1610	600	4620	740	1.9	PLRSE 2
1.377	1.250	1.125	1330	3480	1750	1080	1600	600	4620	740	3.0	PLRSE 2-1/2

FLANGED

Rec. Mtg. Hole Size	Mounting Member Thickness		Bearing Capacity Radial Load (lbs)			Thrust Capacity, Static Limit (lbs)	Stud Capacity (lbs)			Retaining Ring Capacity (lbs)	Approx Weight (lbs)	Part No.
			3000 hrs L10 life @ 100 RPM	500 hrs L10 life @ 33-1/3 RPM	Radial Static Limit		Bending=0.75 Sy		Shear=0.75 x 0.5 x Sy			
	Max	Min					Bend @ (D+B)/2	Bend @ End of Roller				
+0.001 -0.000												
0.627	0.625	0.500	350	920	390	240	150	80	780	150	0.5	FLRSE 1
0.689	0.750	0.625	480	1250	520	320	280	160	1290	230	0.7	FLRSE 1-1/4
0.877	0.875	0.750	940	2470	1110	690	440	260	2300	350	0.8	FLRSE 1-1/2
1.189	1.125	1.000	1330	3480	1750	1080	1050	600	4620	740	2.0	FLRSE 2
1.377	1.250	1.125	1330	3480	1750	1080	1060	600	4620	740	3.0	FLRSE 2-1/2

V-GROOVED

Rec. Mtg. Hole Size	Mounting Member Thickness		Bearing Capacity Radial Load (lbs)			Thrust Capacity, Static Limit (lbs)	Stud Capacity (lbs)		Retaining Ring Capacity (lbs)	Approx Weight (lbs)	Part No.
			3000 hrs L10 life @ 100 RPM	500 hrs L10 life @ 33-1/3 RPM	Radial Static Limit		Bending = 0.75 Sy @ Center of V	Shear = 0.75 x 0.5 x Sy			
	Max	Min									
+0.001 -0.000											
0.627	0.625	0.500	350	920	390	240	190	780	150	1.0	VLRSE 1-1/2
0.689	0.750	0.625	480	1250	520	320	370	1290	230	1.2	VLRSE 2
1.002	1.000	0.875	940	2470	1110	690	490	2300	350	1.6	VLRSE 2-1/2

*For stud hex socket size, see page 85.

LOAD CAPACITIES ARE BASED ON UNIFORM AND STEADY LOADING.